

# 4040XPT Series

## Surface Mounted Closer

### OVERVIEW

The 4040XPT Series is LCN's most popular door closer—and for good reason.

When it comes to heavy-duty, no other closer is like the LCN® 4040XPT. Durable, non-handed, and filled with our all-weather Liquid X hydraulic fluid, it's built for the most demanding high-use-and-abuse applications.

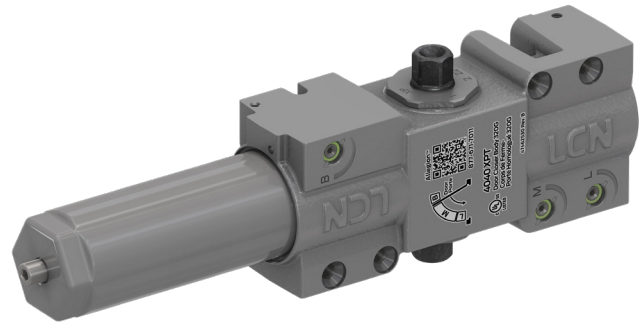
Installation and maintenance is made easy, thanks to its intuitive design, on-product diagrams, and a QR code for a landing page full of resources. Installers and service technicians can do their job confidently—ultimately, maximizing the life of the product.

The track version of our 4040XP, the 4040XPT is for interior doors only and adds a sleek and modern look to your doorway. As a universal closer, the 4040XPT fits a wide variety of applications, easing inventory headaches and serving as the closer for all your high use openings.

And it all comes with LCN's roster of expert support staff, based in Princeton, IL. For questions on applications, installations, technical descriptions, or parts, we've seen it before and we're here to help.

### FEATURES & BENEFITS

- ANSI/BHMA A156.4 Grade 1 rated and meets ADA reduced force opening requirement
- cUL listed and UL listed for self-closing doors without hold-open
- Cast iron cylinder for rugged performance, longer life, and maximum control
- Single-piece, heat-treated, forged steel arms engineered to withstand bending and breaking
- Captured, full complement bearings for consistent force distribution to reduce potential leaks
- Patented snap-fit cover for an improved retention fit that better protects the closer
- Positive stop reg valves eliminate leaking from unintentional overadjustments
- Standard track available, as well as hold open, bumper, and hold open bumper options
- Standard arm, optional double egress arm for pull side mounting on DE frame with closer on the door, max reveal 2-11/16"



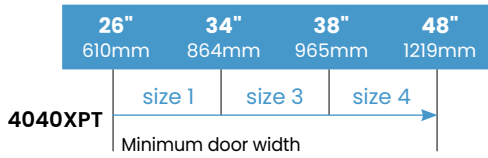
## Ordering Information

How to Order a 4040XPT Series Closer		
1	Choose closer	4040XPT
2	CE label	No (standard selection) Yes
3	Cylinder	STD: Standard cylinder (standard selection) DEL: Delayed action cylinder
4	Arm type	STD: Standard (standard selection) DE: Double egress arm
5	Track	STD: Standard track (standard selection) HO: Hold open track BUMP: Track with bumper HBMP: Hold open track with bumper
6	Finish	<p><b>Powder Coat</b></p> <p>622: Matte black (MTBLK) 689: Aluminum (AL) 690: Statuary (STAT) 691: Light bronze (LTBRZ) 693: Black (GLBLK) 695: Dark bronze (DKBRZ) 696: Brass</p> <p><b>Plated (includes metal cover)</b></p> <p>616: Satin bronze, blackened 632: Bright brass 633: Satin brass 639: Satin bronze 646: Satin bronze blackened 646: Satin nickel 651: Bright chrome 652: Satin chrome</p> <p><b>Special finishes</b></p> <p>RAL: Custom powder coat MTLPC: Bright metallic</p>
7	Cover	STD: Standard cover (standard selection) MC: Metal cover
8	Screw package	<p>SRT: Self reaming tap screws - default TBSRT: Through bolt self reaming and tapping screws HSRT: Hold open self reaming and tapping screws - default HTBSRT: Hold open through bolt self reaming and tapping screws WMS: Wood and machine screws TBWMS: Through bolt wood and machine screws HWMS: Hold open wood and machine screws HTBWMS: Hold open through bolt wood and machine screws MWMS: Metric wood and machine screws MTBMS: Metric metal through bolt machine screws TORX: Torx machine screws TBTRX: Through bolt and Torx machine screws HTORX: Hold open Torx screws HTBTX: Hold open through bolt Torx screws</p>
9	SRI primer (powder coat only)	No (standard selection) Yes

### Table of Sizes

- Non-sized 4040XPT Series cylinder is adjustable from sizes 1 through 4 and is shipped set to size 3

### Interior Door Width



→ Indicates recommended range of door width for closer size

### Reduced Opening Force 4040XPT Series Closers

**CAUTION!** Any manual door closer, including those certified by BHMA to conform to ANSI Standard A156.4, that is selected, installed and adjusted based on ADA or other reduced opening force requirements may not provide sufficient power to reliably close and latch a door.

Refer to [Automatic Operators](#) catalog for information on systems that meet reduced opening force requirements without effecting closing power.

Door Width	36"	42"	48"
8.5* lbs.	N/A	N/A	N/A
5.0* lbs.	4040XPT	4040XPT	4040XPT

\* Maximum opening force.