

4040XP Series

Surface Mounted Closer

OVERVIEW

The 4040XP Series is LCN's most popular door closer—and for good reason.

When it comes to heavy-duty, no other closer is like the LCN® 4040XP. Durable, non-handed, and filled with our all-weather Liquid X hydraulic fluid, it's built for the most demanding high-use-and-abuse applications.

Installation and maintenance is made easy, thanks to its intuitive design, on-product diagrams, and a QR code for a landing page full of resources. Installers and service technicians can do their job confidently—ultimately, maximizing the life of the product.

As a universal closer, the 4040XP fits a wide variety of applications, easing inventory headaches and serving as the closer for all your high use openings.

And it all comes with LCN's roster of expert support staff, based in Princeton, IL. For questions on applications, installations, technical descriptions, or parts, we've seen it before and we're here to help.



FEATURES & BENEFITS

- ANSI/BHMA A156.4 Grade 1 rated and meets ADA reduced force opening requirement
- cUL listed and UL listed for self-closing doors without hold-open
- Cast iron cylinder for rugged performance, longer life, and maximum control
- Single-piece, heat-treated, forged steel arms engineered to withstand bending and breaking
- Captured, full complement bearings for consistent force distribution to reduce potential leaks
- Patented snap-fit cover for an improved retention fit that better protects the closer
- Positive stop reg valves eliminate leaking from unintentional over-adjustments
- LCN Green Dial provides intuitive graphics to aid adjustments

CYLINDER

4040XP-3071

Cast Iron Cylinder Assembly

Handing

Non-handed

Sizing

Adjustable spring size 1-6, includes LCN Green Dial

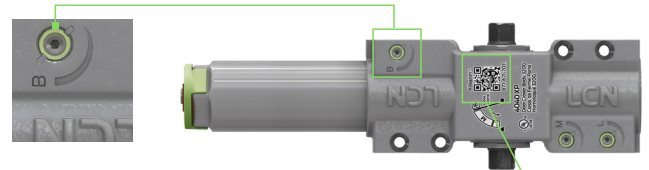
Available Cylinder Options

DEL	Delayed action cylinder
-----	-------------------------

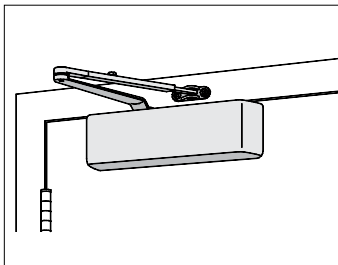


ADJUSTMENTS

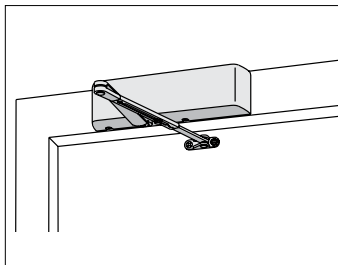
- LCN Green Dial provides a visual reference of the spring power setting, taking the guesswork out of spring power adjustments.
- Additional adjustments can be made to the back check, main, and latch regulation valves which are labeled for easy identification.
 - Note: Labels correspond to a diagram with door swing zones located on the closer body.
- A patented positive stop feature on all regulation valves. The improved staking feature prevents the screw from being backed out and causing accidental damage to the product.
 - The patented regulation valve indicators provide visual color indicators of how far a screw is backed out—the more visible the component, the faster the speed.
 - This makes adjustments simpler and more intuitive.
- QR code that provides on-the-spot access to interactive installation and maintenance instructions and tech support.



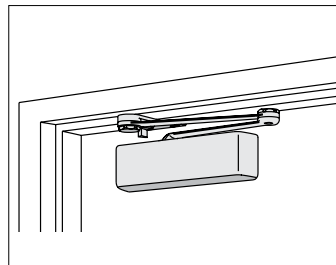
MOUNTING



Hinge (Pull Side)



Top Jamb (Push Side)



Parallel Arm (Push Side)

FINISHES

Powder Coat Finishes



622
Matte Black



689
Aluminum



690
Statuary Bronze



691
Light Bronze



693
Black



695
Dark Bronze



696
Brass

150+ additional custom colors available using the RAL numbering system

Metal Plated Finishes



632
Bright Brass



633
Satin Brass



639
Satin Bronze



616
Satin Bronze,
Blackened



646
Satin Nickel



651
Bright Chrome



652
Satin Chrome

Available Finish Options	
MTLPC	Brite metallic: Custom powder coat finish, which resembles that of 651 or 652 plated finish.
SRI	For installations where a higher level of protection against weather conditions, or the effects of a potentially corrosive atmosphere is required, LCN offers a special rust inhibiting (SRI) process. Ferrous metal components receive an SRI pretreatment and a standard powder coat finish of your choice, or a custom powder coat finish for a nominal additional cost. Closers treated with the SRI process exceed the 100 hour protection level available with standard LCN powder coated finishes.

ARMS



4040XP-3077
Regular Arm (REGARM)

- Non-handed
- Mounts pull side or top jamb with shallow reveal P4041 closer includes PA shoe, 4040XP-62PA required for parallel arm mounting



4040XP-3077L
Long Arm (LONG)

- Non-handed
- Includes long rod and shoe, 4040XP-79LR for top jamb mount
- Optional



4040XP-3077ELR
Extra Long Arm (XLONG)

- Non-handed
- Includes extra long rod and shoe, 4040XP-79ELR for top jamb mount with deep reveal
- Optional



4040XP-3049
Hold Open Arm (H)

- Non-handed
- Mounts pull side or top jamb with shallow reveal, hold open adjustable shoe
- 4040XP closer includes 4040XP-62PA shoe required for parallel arm mounting
- Optional



4040XP-3049L
Hold Open Long Arm (HLONG)

- Non-handed
- Includes long head and tube, 4040XP-3048L for top jamb mount
- Optional



4040XP-3077EDA
Extra Duty Arm (EDA)

- Non-handed
- Features forged, solid steel main and forearm for potentially abusive installations
- Optional



4040XP-3049EDA
Hold Open Extra Duty Arm (HEDA)

- Handed
- Parallel arm features forged, solid steel main and forearm for potentially abusive installations
- Hold open function is adjusted at the shoe
- Optional



4040XP-3077EDA/62G
Extra Duty Arm with 62G Thick Hub Shoe (EDAW62G)

- Non-handed
- Features forged, solid steel main and forearm for potentially abusive installations
- 62G shoe provides additional blade stop clearance
- Optional



4040XP-3049EDA/62G
Hold Open Extra Duty Arm with 62G Thick Hub Shoe (HEDA62G)

- Handed
- Features forged, solid steel main and forearm for potentially abusive installations
- 62G shoe provides additional blade stop clearance; hold open function is adjusted at the shoe
- Optional



4040XP-3077CNS
Cush-n-Stop Arm (CUSH)

- Non-handed
- Features solid forged steel main arm and forearm with stop in soffit shoe.
- Optional



4040XP-3049CNS
Hold Open Cush-n-Stop Arm (HCUSH)

- Non-handed
- Hold open function with templated stop/hold open points
- Handle controls hold open function
- Optional



4040XP-3077SCNS
Spring Cush-n-Stop Arm (SCUSH)

- Non-handed
- For potentially abusive applications features solid forged steel main arm and forearm with spring loaded stop in the soffit shoe
- Optional



4040XP-3049SCNS
Spring Hold Open Cush-n-Stop Arm (SHCUSH)

- Non-handed
- For potentially abusive applications features solid forged steel main arm and forearm with spring loaded stop in the soffit shoe
- Handle controls hold open function
- Optional

COVERS

Standard Cover



Front view



Back view

4040XP-72
Plastic Cover (PC)

- Non-handed
- Includes 4040XP-54 snap-on cover clip
- Snap-fit cover with patented retention fit

Optional Cover



4040XP-72MC
Metal Cover (MC)

- Handed
- Required for plated finishes and custom powder coat finishes
- Optional

INSTALLATION ACCESSORIES



4040XP-18
Plate

- Required for hinge side mount where top rail is less than 3-3/4" (95 mm)
- Requires minimum 2" (51 mm) minimum top rail



4040XP-18G
Plate

- Locates top jamb mounted closer flush with top of head frame face in flush ceiling condition
- Requires 1-3/4" (44 mm) minimum head frame



4040XP-18TJ
Plate

- Centers top jamb mounted closer vertically on head frame where face is less than 3-1/2" (89 mm). Plate requires 1-3/4" (44 mm) minimum head frame



4040XP-18PA
Plate

- Required for parallel arm mounting where top rail is less than 5-1/2" (140 mm), measured from the stop
- Requires 2" (51 mm) minimum top rail



4040XP-62PA
PA Shoe

- Required for parallel arm mounting



4040XP-30
CUSH Shoe Support

- Provides anchorage for fifth screw used with CUSH arms, where reveal is less than 3-1/16" (78 mm)
- Optional



4040XP-61
Blade Stop Spacer

- Required to lower parallel arm shoe to clear 1/2" (13 mm) blade stop
- Optional



4040XP-419
PA Flush Panel Adapter

- Provides horizontal mounting surface for parallel arm shoe on single rabbeted or flush frame
- Optional



4040XP-62A
Auxiliary Shoe

- Requires a top rail of 7" (178 mm)
- Shoe replaces -62PA for parallel arm mounting of regular arm with overhead holder/stop
- Optional



4040XP-54
Snap-On Cover Clip

- Used to secure 4040XP-72 plastic cover to cylinder body

FASTENERS

Self-reaming and tapping screws included standard

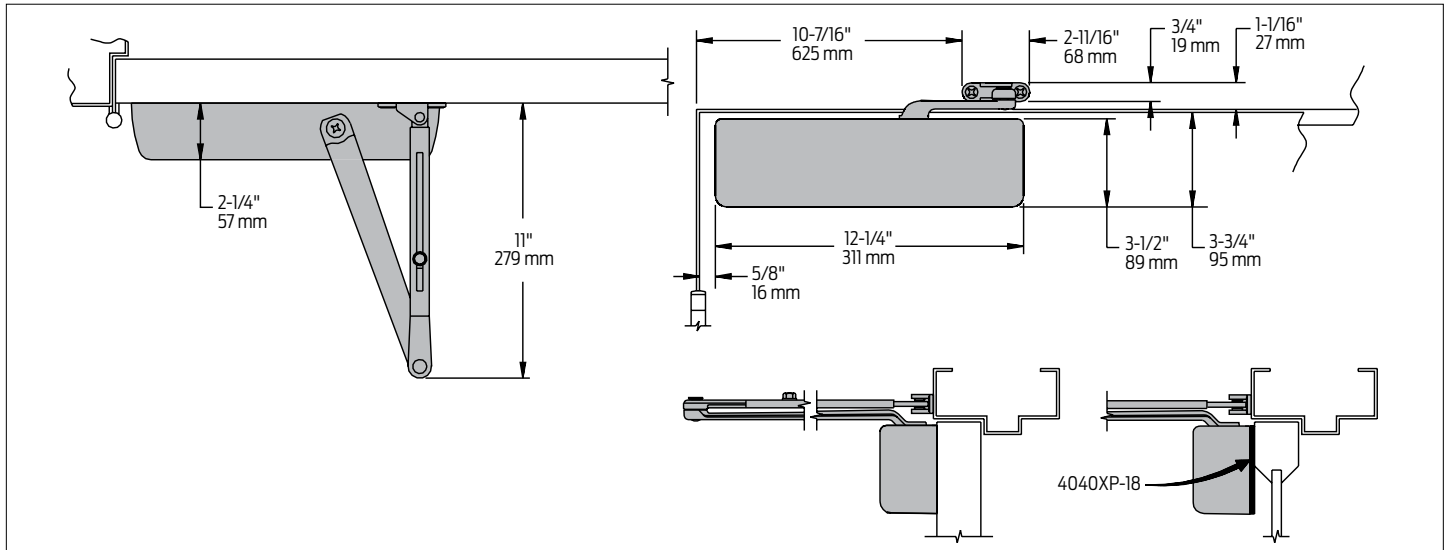
Fastener Pack Options

TBSRT	TB ¹ with self-reaming and tapping screws
WMS	Wood and machine screw
TBWMS	TB ¹ , wood and machine screw
TORX	TORX machine screw
TBTRX	TB ¹ and TORX machine screw

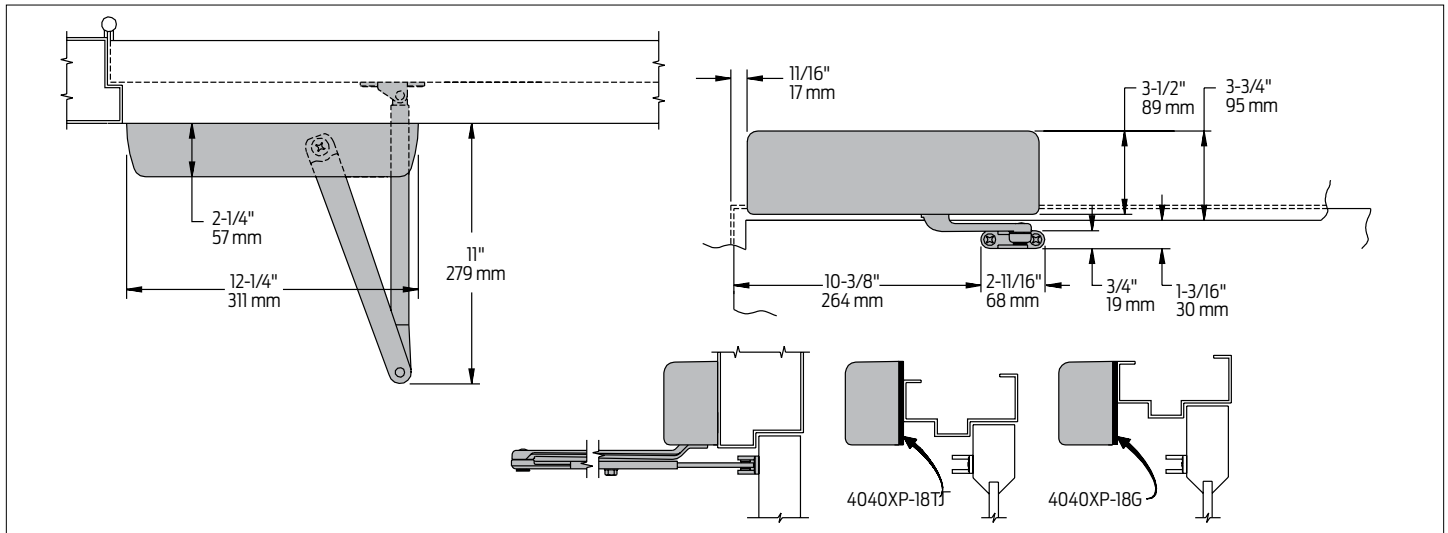
¹Specify door thickness if other than 1-3/4"

DIMENSIONS AND MOUNTING

Hinge (Pull) Side Mounting

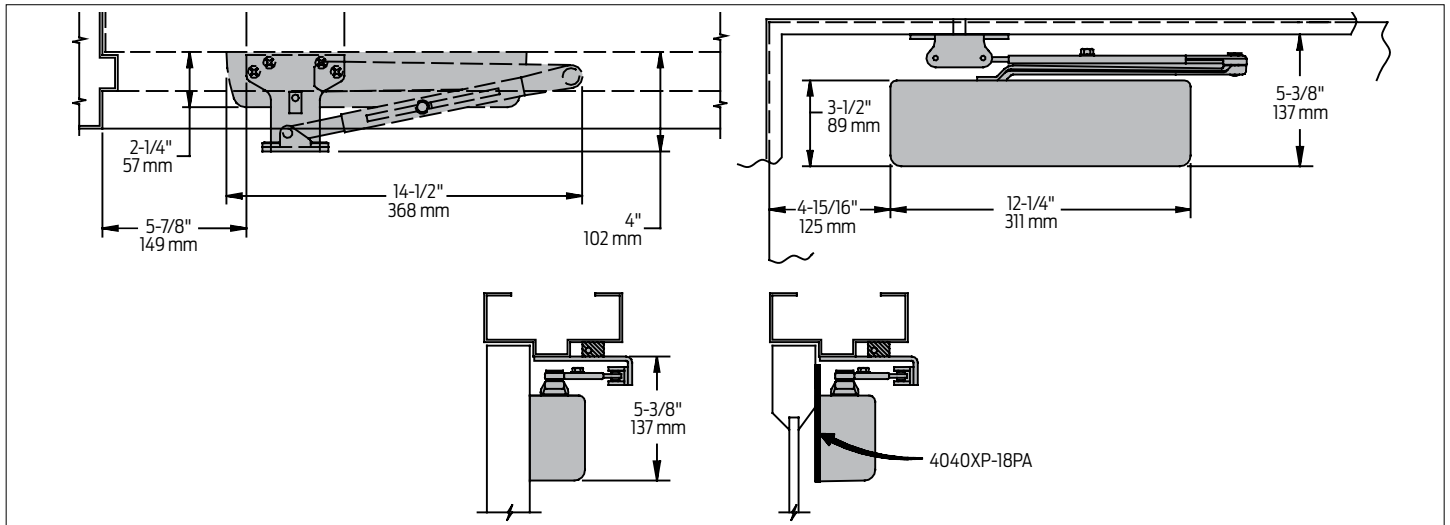


Top Jamb (Push Side) Mounting

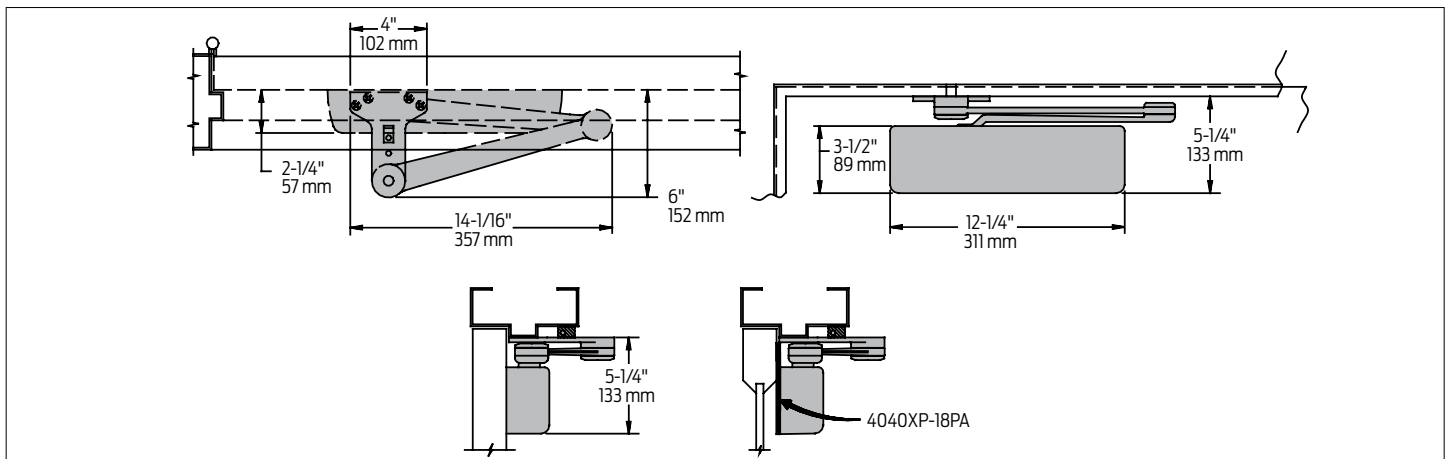


DIMENSIONS AND MOUNTING

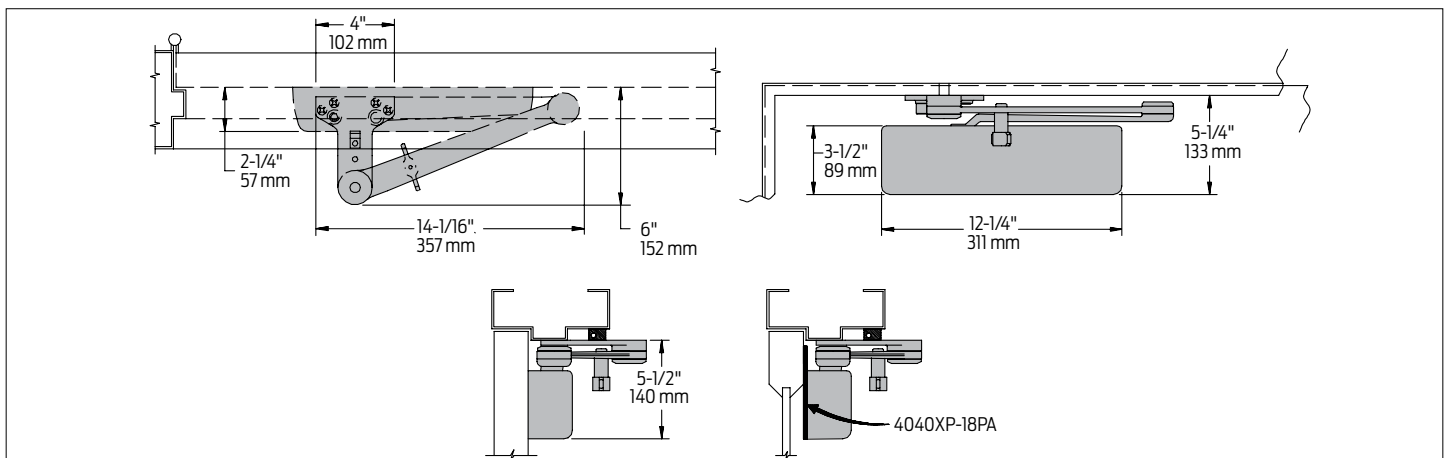
Parallel Arm (Push Side) Mounting



EDA Mount



CUSH Mount



SPECIFICATIONS

Accessibility	Available with less than 5.0 lbs. opening force on 36" door	Standard features <ul style="list-style-type: none"> Full complement bearings with minimum 0.5" height to help withstand abuse All-weather Liquid X fluid for consistent performance through every season Non-PRV (pressure relief valve) design to minimize risk of property damage, injury, increased maintenance, and liability exposure Snap-on cover with patented retention improvement to protect the products Powder coat finish that lasts longer than spray lacquer 30-year warranty Ease of Installation and Adjustment <ul style="list-style-type: none"> Tight tolerances in manufacturing for accuracy and precision LCN Green Dial to take the guesswork out of spring force adjustments Peel-n-stick template for quick and accurate installation Patented positive stop to prevent the screw from being backed out Patented regulation valve indicators for visual color indicators Independent speed adjustments for greater door control Graphic visuals and indicators to make adjustments faster, easier, and consistent QR code for on-the-spot access to interactive instructions and tech support Flexibility <ul style="list-style-type: none"> Universal non-handed design Full ranges of mounts Adjustable spring sizes 1-6
Certifications/ approvals	<ul style="list-style-type: none"> Grade 1 – ANSI A156.4 UL 10C Meets BAA (Buy America Act) and BABA (Build America Buy America) 	
Degree of operation	<p>Hinge (pull) side Max opening: 120° Hold open: 90–120°</p> <p>Top jamb (push side) mount Max opening: 120° Hold open: 85–120°</p> <p>Parallel arm with 62PA Max opening: 180° Hold open: 180°</p> <p>EDA Max opening: 180° Hold open: 180°</p> <p>Cush and spring cush Max opening: 110° Hold open: 110°</p>	
Environmental conditions	<ul style="list-style-type: none"> Approved for interior use Approved for exterior use (SRI coated only) LCN's all-weather Liquid X hydraulic fluid performs to temperature ranges from 120°F (49°C) to -30°F (-35°C) LCN's powder coat finish surpasses 100 hours of salt spray which is over four times the ANSI standard for corrosion resistance. 	
Warranty	30 years	
Standard features	Quality and Durability <ul style="list-style-type: none"> Cast iron cylinder for rugged performance Single-piece, heat-treated forged steel arms to withstand greater forces Heat-treated 1-1/2" diameter piston for extra hardness and strength Double heat-treated steel pinion 11/16" journal diameter for greater wear-resistance 	
Certifications/ approvals	<ul style="list-style-type: none"> Grade 1 – ANSI A156.4 UL 10C Meets BAA (Buy America Act) and BABA (Build America Buy America) 	