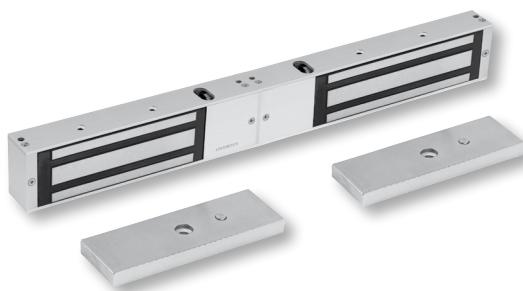


**LOCKNETICS®**

# Price book 15

Effective February 28, 2025



## United States Customer Care

Our Customer Care Representatives are available for questions or assistance.

**877-671-7011**

### Customer service

- ☎ Press **1**
- ✉ [Support@allegion.com](mailto:Support@allegion.com)

### Technical support

- ☎ Press **2**
- ✉ [Electronic\\_Lock\\_TechProdSupport@allegion.com](mailto:Electronic_Lock_TechProdSupport@allegion.com)

### For new projects or to locate an authorized distributor

- ☎ Press **3**

### Placing orders

- ✉ [Allegion\\_Orders@allegion.com](mailto:Allegion_Orders@allegion.com)

### Sales support

- ✉ [Support@allegion.com](mailto:Support@allegion.com)

### United States Administrative Office

11819 N. Pennsylvania Street  
Carmel, IN 46032  
[allegion.com/us](http://allegion.com/us)

## Canada Customer Care

Our Customer Care Representatives are available for questions or assistance.

- ☎ 800-900-4734
- ✉ [Canada.CustomerService@allegion.com](mailto:Canada.CustomerService@allegion.com)

### Technical product support

- ✉ [Canada.TechServices@allegion.com](mailto:Canada.TechServices@allegion.com)

### Placing orders

You can place orders with Allegion via the fax number or email listed below:

- ☎ 1-800-209-4734
- ✉ [Canada.Orders.Service@allegion.com](mailto:Canada.Orders.Service@allegion.com)

### Canada Administrative Office

1076 Lakeshore Road East  
East Mississauga, Ontario L5E 1E4  
[allegion.ca](http://allegion.ca)

## United States Request for quote

### Carolinas

(North Carolina, South Carolina, Virginia)  
[Carolinas.Quotes@allegion.com](mailto:Carolinas.Quotes@allegion.com)

### Central

(Illinois, Iowa, Kansas, Missouri, Nebraska)  
[Central.Quotes@allegion.com](mailto:Central.Quotes@allegion.com)

### Chicago

(Northern Illinois, Wisconsin)  
[Chicago.Quotes@allegion.com](mailto:Chicago.Quotes@allegion.com)

### Florida

[Florida.Quotes@allegion.com](mailto:Florida.Quotes@allegion.com)

### Metro New York

(Metro New York, Northern New Jersey)  
[Metro.Quotes@allegion.com](mailto:Metro.Quotes@allegion.com)

### Michigan

[Michigan.Quotes@allegion.com](mailto:Michigan.Quotes@allegion.com)

### Mid Atlantic North

(New York, Western Pennsylvania)  
[Mid.Atlantic.North.Quotes@allegion.com](mailto:Mid.Atlantic.North.Quotes@allegion.com)

### Mid Atlantic South

(Delaware, Eastern Pennsylvania, Maryland, Northern Virginia, Southern New Jersey, Washington DC)  
[Mid.Atlantic.South.Quotes@allegion.com](mailto:Mid.Atlantic.South.Quotes@allegion.com)

### Midwest

(Indiana, Kentucky, Ohio, West Virginia)  
[Midwest.Quotes@allegion.com](mailto:Midwest.Quotes@allegion.com)

### Mountain States

(Colorado, Idaho, Montana, Nevada, Utah, Wyoming)  
[Mtn.States.Quotes@allegion.com](mailto:Mtn.States.Quotes@allegion.com)

### New England

(Connecticut, Maine, Massachusetts, New Hampshire, Rhode Island, Vermont)  
[NewEngland.Quotes@allegion.com](mailto:NewEngland.Quotes@allegion.com)

### North Central

(Minnesota, North Dakota, South Dakota)  
[NorthCentral.Quotes@allegion.com](mailto:NorthCentral.Quotes@allegion.com)

### Northern California

[NoCal.Quotes@allegion.com](mailto:NoCal.Quotes@allegion.com)

### Northwest

(Alaska, Oregon, Washington)  
[Northwest.Quotes@allegion.com](mailto:Northwest.Quotes@allegion.com)

### South

(Alabama, Georgia, Louisiana, Mississippi, Tennessee)  
[South.Quotes@allegion.com](mailto:South.Quotes@allegion.com)

### Southern California

(Southern California, Hawaii)  
[SoCal.Quotes@allegion.com](mailto:SoCal.Quotes@allegion.com)

### Southwest

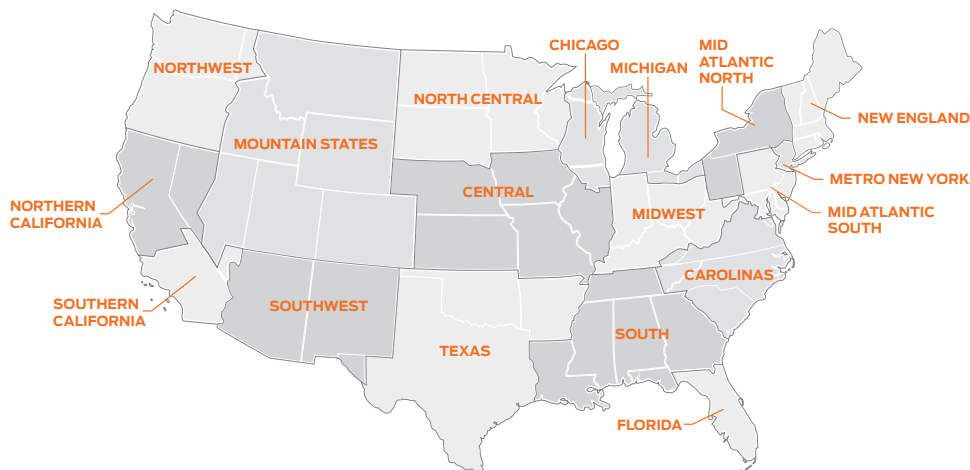
(Arizona, New Mexico)  
[Southwest.Quotes@allegion.com](mailto:Southwest.Quotes@allegion.com)

### Texas

(Arkansas, Texas, Oklahoma)  
[Texas.Quotes@allegion.com](mailto:Texas.Quotes@allegion.com)

## Canada Request for quote

(All Regions/Provinces)  
[Quote.Request.Canada@allegion.com](mailto:Quote.Request.Canada@allegion.com)



**Contents**

**ELECTROMAGNETIC LOCKS AND ELECTRIC STRIKES**

**Electromagnetic locks**

WMG Series ..... 4  
MG Series ..... 5

**Electric strikes**

CS Series ..... 6  
NC Series ..... 7  
MDS Series ..... 8  
RS Series ..... 9

**ACCESS CONTROL ACCESSORIES**

**Pushbuttons**

IPB Series ..... 10  
MPB Series ..... 10  
System accessories ..... 10

**Specialty switches**

TS Series ..... 11  
WS Series ..... 11

**Digital keypads**

DKP Series ..... 12

**Touch bars**

TB Series ..... 13

**Push plates**

PPH Series ..... 14

**Emergency breaks**

EGB Series ..... 15

**Door cords**

DC Series ..... 16

**Specialty sensor and buzzer switches**

Timer-buzzer rectifier ..... 17  
EMS Series ..... 17

**Power supplies**

LP Series ..... 18

**WEIGHT AND CASE QUANTITY**

Electromagnetic locks ..... 20  
Electric strikes ..... 20  
Accessories ..... 21

**Policies and documents**

The purchase of Allegion products is governed by the Allegion Authorized Seller Program.

For program terms and conditions, and other program details, please visit:

USA [www.allegion.com/AuthorizedSeller](http://www.allegion.com/AuthorizedSeller)  
CAN [www.allegion.ca/policies](http://www.allegion.ca/policies)

For Warranty information, visit [us.allegion.com/warranty](http://us.allegion.com/warranty) or contact Customer Service at:

USA 877-671-7011  
CAN 800-900-4734

**Sustainability**

Allegion can provide sustainability documentation for select products, ensuring transparency and adherence to environmental standards and building certification programs such as LEED and Living Building Challenge. This documentation includes detailed information on the sustainable practices and materials used, helping you make informed decisions that align with your sustainability goals.

To view the full list of products with declarations, please visit: <https://us.allegion.com/en/resources/sustainability.html>

# WMG Series

600 and 1200 models



The WMG Series of weather resistant, surface electromagnetic locks are designed for high profile openings that require a tamper-resistant lock with an aesthetically pleasing appearance. A stainless steel housing, fire-rated epoxy seal, optional mounting bracket and an assortment of brackets enable the WMG Series to be used in a variety of applications. Designed for up to 600 lb. or 1200 lb. holding strength.

**Specifications**

- UL10C single door, listed
- UL294, listed
- UL1034, outdoor rating, listed

**Electrical**

- Dual voltage: 12 VDC @ 0.5A/24 VDC @ 0.25A

**Electromagnetic lock finishes**

- 630 (US32D) Satin stainless steel

**Mounting accessories finishes**

- 628 (US28) Aluminum

Product name	Product description	BHMA finish	Voltage	UPC	List price
WMG600	Weatherproof mag lock - 600lb	630	12/24 VDC	043156646098	\$458.00
WZBK600	Z-bracket - 600lb	628	N/A	043156646104	\$174.00
WLBK600	L-bracket - 600lb	628	N/A	043156646111	\$74.10
WMG1200	Weatherproof mag lock - 1200lb	630	12/24 VDC	043156646142	\$582.00
WZBK1200	Z-bracket - 1200lb	628	N/A	043156646159	\$180.00
WLBK1200	L-bracket - 1200lb	628	N/A	043156646166	\$82.20
WFP50	½" Filler plate	628	N/A	043156646128	\$32.40
WFP63	⅝" Filler plate	628	N/A	043156646135	\$32.40

# MG Series

## 600 and 1200 models



The MG Series of surface mount electromagnetic locks provides a cost competitive, slim profile and dependable solution for a variety of applications. Designed for up to 600 lb. or 1200 lb. holding strength for both single and double electromagnetic locks.

**Specifications**

- UL10C, listed
- UL294, listed
- Indoor use only

**DT model options**

- Door status sensor S.P.D.T. switch to determine if door is open or closed
- Timer to provide a 0-90 second delay for relocking

**Electrical**

- Dual voltage: 12 VDC @ 0.5A/24 VDC @ 0.25A

**Electromagnetic lock finishes**

- 630 (US32D) Satin stainless steel

**Mounting accessories finishes**

- 628 (US28) Aluminum

Product name	Product description	BHMA finish	Voltage	UPC	List price
MG600	Mag lock - Standard 600lb	630	12/24 VDC	043156646173	\$197.00
MG600DT	Mag lock - Monitored 600lb	630	12/24 VDC	043156646180	\$229.00
MG600-2	Double mag lock - Standard 600lb	630	12/24 VDC	043156081103	\$366.00
MG600DT-2	Double mag lock - Monitored 600lb	630	12/24 VDC	043156081110	\$465.00
MLBK600	L-bracket - 600lb <sup>1</sup>	628	N/A	043156646210	\$64.90
MZBK600	Z-bracket - 600lb <sup>1</sup>	628	N/A	043156646197	\$129.00
MG1200	Mag lock - Standard 1200lb	630	12/24 VDC	043156646241	\$296.00
MG1200DT	Mag lock - Monitored 1200lb	630	12/24 VDC	043156646258	\$341.00
MG1200-2	Double mag lock - Standard 1200lb	630	12/24 VDC	043156081127	\$526.00
MG1200DT-2	Double mag lock - Monitored 1200lb	630	12/24 VDC	043156081134	\$606.00
MLBK1200	L-bracket - 1200lb <sup>1</sup>	628	N/A	043156646289	\$72.90
MZBK1200	Z-bracket - 1200lb <sup>1</sup>	628	N/A	043156646265	\$148.00
MUBK	U-bracket - 600lb/1200lb, adjustable	628	N/A	043156646203	\$84.50
MFP50	½" Filler plate <sup>1</sup>	628	N/A	043156646234	\$23.20
MFP63	⅝" Filler plate <sup>1</sup>	628	N/A	043156646227	\$30.20

<sup>1</sup> Double Mags require 2 brackets (L, Z, U) and filler plates.

# CS Series

## 450 and 750 models

The low, versatile profile CS Series of electric strikes are designed for use with cylindrical lock sets and select mortise lock sets without deadbolt for both metal and wood door frames.



**Specifications**

- UL1034 Burglar-resistant electric locking mechanisms, listed
- UL294 (indoor), listed
- Static strength of 1500 lb. static load, UL certified
- Dynamic strength of 70 ft.-lb. dynamic load, UL certified
- 250,000 cycles endurance, UL certified

**Options**

- CS450 Series accepts latch bolt up to 9/16"
- CS750 Series accepts latch bolt up to 3/4"
- Latch bolt monitoring available

**Electrical**

- Dual voltage: 12VDC @ 0.3A/24VDC @ 0.15A

**Finishes**

- 630 (US32D)\* Satin stainless steel
- 613 (US10B) Dark bronze

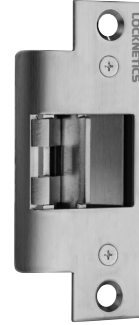
\* Strikes available only in 630 finish.

Product name	Product description	BHMA finish	Voltage	UPC	List price
CS450-32D	E-strike - 9/16" deep	630	12/24 VDC	043156645893	\$211.00
CS450-LBM-32D	E-strike - 9/16" deep with LBM	630	12/24 VDC	043156645909	\$296.00
CS750-32D	E-strike - 3/4" deep	630	12/24 VDC	043156645961	\$218.00
CS750-LBM-32D	E-strike - 3/4" deep with LBM	630	12/24 VDC	043156645978	\$296.00
CSFP-KIT-10B	Face plates - Qty 2; Square and radius corner (4 7/8" x 1 1/4")	613	N/A	043156645916	\$49.70
CCFP-KIT-32D	Radius corner faceplate (6 7/8" x 1 1/4")	630	N/A	043156087365	\$49.70
CCFP-KIT-10B	Radius corner faceplate (6 7/8" x 1 1/4")	613	N/A	043156087358	\$62.40
CWFP-KIT-32D	Radius corner faceplate (7 15/16" x 1 7/16") wood applications	630	N/A	043156645923	\$49.70
CWFP-KIT-10B	Radius corner faceplate (7 15/16" x 1 7/16") wood applications	613	N/A	043156645930	\$62.40
CSLE-.5	1/2" lip extension	N/A	N/A	043156087372	\$64.90
CSLE-1	1" lip extension	N/A	N/A	043156645947	\$64.90
CSLE-2	2" lip extension	N/A	N/A	043156645954	\$64.90
TBR-100	Timer-buzzer rectifier with surge protection for strikes and other access control components	N/A	N/A	043156651740	\$64.90
ESTK-100	E-strike - metal template kit (CS, MDS, RS)	N/A	N/A	043156072842	\$161.00

# NC Series

## 450 model

The no cut electric door strike can be used to convert cylindrical lock sets into an electronic access controlled locking system. No cutting on the frame is required. Simply adjust the vertical alignment feature to the latch bolt centerline and install.



**Specifications**

- UL1034 Burglar-resistant electric locking mechanisms, listed
- UL294 (indoor), listed
- Static strength of 1500 lb. static load, UL certified
- Dynamic strength of 70 ft.-lb. dynamic load, UL certified
- 250,000 cycles endurance, UL certified

**Options**

- Accepts latch bolt up to 9/16"
- Latch bolt monitoring available

**Electrical**

- Dual voltage: 12VDC @ 0.3A/24VDC @ 0.15A

**Finishes**

- 630 (US32D)\* Satin stainless steel
- 613 (US10B) Dark bronze

\* Strikes available only in 630 finish.

Product name	Product description	BHMA finish	Voltage	UPC	List price
NC450	E-strike - no cut - 9/16" deep	630	12/24 VDC	043156087389	\$277.00
NC450-LBM	E-strike - no cut - 9/16" deep with LBM	630	12/24 VDC	043156104895	\$351.00
NCFP-KIT-10B	Face plates - Qty 1; Radius corner (4 7/8" x 1 1/4")	613	N/A	043156087396	\$62.40
NCCFP-KIT-32D	Radius corner face plate (6 7/8" x 1 1/4")	630	N/A	043156087457	\$49.70
NCCFP-KIT-10B	Radius corner face plate (6 7/8" x 1 1/4")	613	N/A	043156087440	\$62.40
NCWFP-KIT-32D	Radius corner face plate (7 15/16" x 1 7/16") wood applications	630	N/A	043156087419	\$49.70
NCWFP-KIT-10B	Radius corner face plate (7 15/16" x 1 7/16") wood applications	613	N/A	043156087402	\$62.40
NC-RAMPS	Removable ramps replacement	630	N/A	043156087426	\$84.50

# MDS Series

## 100 model

The MDS100 Series electric strike is designed for use with heavy duty mortise lock sets and cylindrical lock sets. Five different face plates included for optional flexibility of installation in wood or metal frames.



**Specifications**

- UL1034 Burglar-resistant electric locking mechanisms, listed
- UL294 (indoor), listed
- Static strength of 1500 lb. static load, UL certified
- Dynamic strength of 70ft.-lb. dynamic load, UL certified
- UL10C Fire rated, listed (MDS100-F models only)
- 250,000 cycles endurance, UL certified

**Options**

- Fire rating
- Latch bolt monitoring available

**Electrical**

- Dual voltage: 12VDC @ 0.3A/24VDC @ 0.15A

**Finishes**

- 630 (US32D)\* Satin stainless steel
- 613 (US10B) Dark bronze

\* Strikes available only in 630 finish.

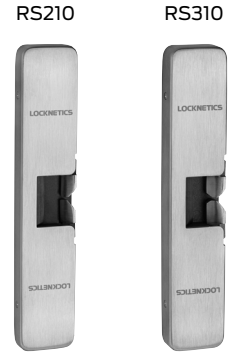
Product name	Product description	BHMA finish	Voltage	UPC	List price
MDS100-32D	E-strike - 1" deep; 5 face plates	630	12/24 VDC	043156645985	\$643.00
MDS100-F-32D	E-strike - 1" deep; 5 face plates (Fire-rated)	630	12/24 VDC	043156646074	\$725.00
MDS100-LBM-32D	E-strike - 1" deep; 5 face plates with LBM	630	12/24 VDC	043156645992	\$767.00
MDS100-F-LBM-32D	E-strike - 1" deep; 5 face plates with LBM (Fire-rated)	630	12/24 VDC	043156646081	\$849.00
MDSFP-KIT-10B	5 piece extra faceplate kit	613	N/A	043156646005	\$70.70
TBR-100	Timer-buzzer rectifier with surge protection for strikes and other access control components	N/A	N/A	043156651740	\$64.90
ESTK-100	E-strike - metal template kit (CS, MDS, RS)	N/A	N/A	043156072842	\$161.00



# RS Series

## 210 and 310 models

The RS Series of surface mounted electric rim strikes are designed with endurance and flexibility. Available to accommodate rim exit devices with a 1/2" or 3/4" throw pullman latch bolt and multiple spacers are included for superior installation. Four attachment points to the frame provide for extra durability.



**Specifications**

- UL1034 Burglar-resistant electric locking mechanisms, listed
- UL294 (indoor), listed
- UL10C Fire Rated, 90 min. RS310-F models only
- Static strength of 1500 lb. static load, UL certified
- Dynamic strength of 70 ft.-lb. dynamic load, UL certified
- 250,000 cycles endurance, UL certified

**Options**

- RS210 Series accepts 1/2" throw pullman latch bolt
- RS310 Series accepts 3/4" throw pullman latch bolt
- Latch bolt monitoring available
- RS310 available in fire rated version

**Electrical**

- Dual-voltage 12 VDC @ .54A / 24 VDC @ .27A

**Finishes**

- 630 (US32D) Satin stainless steel
- 613 (US10B) Dark bronze

Product name	Product description	BHMA finish	Voltage	UPC	List price
RS210-32D	Rim strike - 1/2" depth with spacers	630	12/24 VDC	194555701861	\$578.00
RS210-10B	Rim strike - 1/2" depth with spacers	613	12/24 VDC	194555701854	\$607.00
RS210-LBM-US32D	Rim strike - 1/2" depth with spacers and LBM	630	12/24 VDC	194555701885	\$705.00
RS210-LBM-US10B	Rim strike - 1/2" depth with spacers and LBM	613	12/24 VDC	194555701878	\$730.00
RS310-32D	Rim strike - 3/4" depth with spacers	630	12/24 VDC	194555701984	\$588.00
RS310-10B	Rim strike - 3/4" depth with spacers	613	12/24 VDC	194555701977	\$619.00
RS310-LBM-US32D	Rim strike - 3/4" depth with spacers and LBM	630	12/24 VDC	194555702042	\$689.00
RS310-LBM-US10B	Rim strike - 3/4" depth with spacers and LBM	613	12/24 VDC	194555702035	\$742.00
RS310-F-32D	Fire rated rim strike - 3/4" depth with spacers	630	12/24 VDC	194555702004	\$643.00
RS310-F-10B	Fire rated rim strike - 3/4" depth with spacers	613	12/24 VDC	194555701991	\$695.00
RS310-F-LBM-US32D	Fire rated rim strike - 3/4" depth with spacers and LBM	630	12/24 VDC	194555702028	\$765.00
RS310-F-LBM-US10B	Fire rated rim strike - 3/4" depth with spacers and LBM	613	12/24 VDC	194555702011	\$818.00
RS-SPACER-US32D	Rim strike spacer	630	N/A	043156087433	\$57.90
RS-SPACER-US10B	Rim strike spacer	613	N/A	043156096336	\$70.70
ESTK-100	E-strike - metal template kit (CS, MDS, RS)	N/A	N/A	043156072842	\$161.00

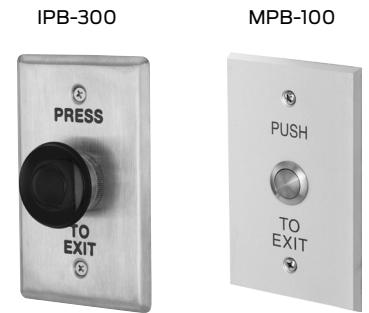
# Pushbuttons

## IPB Series (Illuminated pushbuttons)

The push to exit button series combines the most popular buttons in one box. The IPB Series is packaged with multiple lens options and switches for flexibility.

## MPB Series (Metal pushbuttons)

The metal push to exit button provides increased security with a durable and stylish appearance.



Product name	Product description	UPC	List price
IPB-100	LED illuminated 2" button; 3 lenses; S.P.D.T. and D.P.D.T. switches included	043156651351	\$81.10
IPB-100-N	LED illuminated 2" button; 3 lenses; S.P.D.T. and D.P.D.T. switches included; Narrow plate	043156001644	\$81.10
IPB-300	LED illuminated mushroom style round button; 2 lenses; S.P.D.T. switch	043156651375	\$135.00
IPB-300-N	LED illuminated mushroom style round button; 2 lenses; S.P.D.T. switch; Narrow plate	043156651382	\$135.00
MPB-100	Metal button; 'Push to Exit'; S.P.D.T. switch	043156651405	\$135.00
MPB-100-N	Metal button; 'Push to Exit'; S.P.D.T. switch; Narrow plate	043156651399	\$135.00

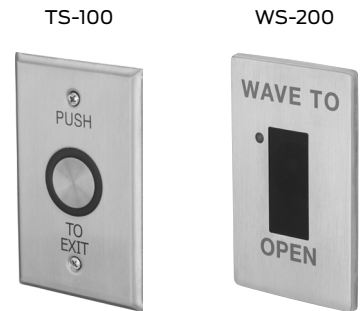
# Specialty switches

## TS Series (Touch switch)

The touch switch is a cap sense style switch. There is no movable action in the switch, but instead only a touch is required to operate it. The illuminated bi-color LED provides easy status indication.

## WS Series (Wave switch)

The touchless wave switch series is ideal for request-to-exit situations where a sanitary environment is desired such as healthcare facilities, restaurants, restrooms or labs.



Product name	Product description	UPC	List price
TS-100	Dual LED status indicator with programmable timer; S.P.D.T. switch	043156651498	\$156.00
TS-100-N	Dual LED status indicator with programmable timer; S.P.D.T. switch; Narrow plate	043156651504	\$156.00
WS-200	Touchless infrared sensor switch activation with dual LED and time delay; S.P.D.T. switch	043156651511	\$161.00
WS-200-MB	Touchless infrared sensor switch activation with dual LED and time delay; S.P.D.T. switch; Metal box included	043156651528	\$174.00

# Digital keypads

## DKP Series

The DKP Series keypads are designed for simple access control or code control for up to four individual devices. These keypads are a great choice for controlling electric strikes, electromagnetic locks, security systems or other types of openings requiring on/off or momentary control outputs.

DKP-165, DKP-165-S



Product name	Product description	UPC	List price
DKP-165	Indoor digital keypad; Up to 480 users with timed anti-pass back	043156651634	\$137.00
DKP-165-S	Digital keypad; Surface mount with case; Up to 480 users with timed anti-pass back	043156651641	\$216.00
DKP-165-FM	Digital keypad; Flush mount; Up to 480 users with timed anti-pass back	043156651658	\$186.00
DKP-NS	Outdoor digital keypad; Up to 1,010 users with two zone, re-locking time delay	043156081189	\$259.00

# Touch bars

## TB Series

The touch bar is a request to exit device, usually installed as a redundancy to other access control devices for non-fire rated indoor doors.

TB-36, TB-42, TB-48



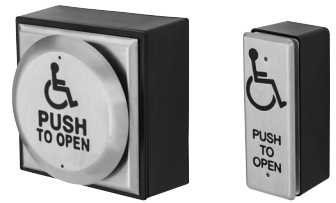
Product name	Product description	BHMA finish	UPC	List price
TB-36	Touch bar - 36" door	628	043156651467	\$234.00
TB-42	Touch bar - 42" door	628	043156651474	\$296.00
TB-48	Touch bar - 48" door	628	043156651481	\$296.00

# Push plates

## PPH Series

The PPH Series of push plates are dependable, responsive and easy to install stainless steel switches. These assisted door controls are ideal for a broad range of door automation.

PPH-100-PL, PPH-50



Product name	Product description	UPC	List price
PPH-100-PL	Large round push plate with black box; Stainless steel faceplate with D.P.D.T. switch	043156651412	\$140.00
PPH-100-AL	Large round push plate with aluminum box; Stainless steel faceplate with D.P.D.T. switch	043156651429	\$160.00
PPH-200-LED	Illuminated dual color large square push plate with black box; Stainless steel faceplate with S.P.D.T. switch	043156651443	\$184.00
PPH-50	Rectangular narrow push plate with black box; Stainless steel faceplate with S.P.D.T. switch	043156651450	\$98.40

# Emergency breaks

## EGB Series

The resettable EGB Series are call points that can be activated without a power supply during emergencies. They are typically located on fire escape doors. The main function is to override an electrical locking device in case of emergency. A provided key allows the unit to be reset to normal mode.

EGB-100-G, EGB-100-R

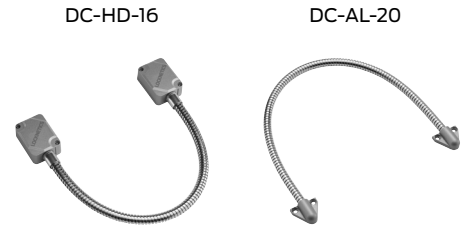


Product name	Product description	UPC	List price
EGB-100-G	Resettable emergency call point station with green case; Includes blue back light, built-in buzzer and D.P.D.T. switch	043156651597	\$148.00
EGB-100-R	Resettable emergency call point station with red case; Includes blue back light, built-in buzzer and D.P.D.T. switch	043156651603	\$148.00
EGB-KEY	Replacement and resettable key	043156651610	\$12.80
EGB-COV	Replacement clear plastic cover	043156651627	\$12.80

# Door cords

## DC Series

Door cords offer a protective conduit for running wires from the frame to the door installed with electrical devices such as electrified locks. The cords are available in various lengths and finishes.



Product name	Product description	UPC	List price
DC-HD-16	Heavy duty door cord with aluminum boxes; Stainless steel cable; 16" length	043156651559	\$50.90
DC-HD-16-10B	Heavy duty door cord with aluminum boxes; Stainless steel cable; 16" length; 613 finish	043156081097	\$63.70
DC-AL-20	Medium duty door cord with aluminum end caps; Stainless steel cable; 20" length	043156651566	\$34.70
DC-BR-20	Medium duty door cord with aluminum end caps; Stainless steel cable; 613 finish	043156001651	\$39.30
DC-PL-12	Light duty door cord with silver plastic end caps; Stainless steel cable; 12" lengths	043156651573	\$27.70
DC-PL-20	Light duty door cord with silver plastic end caps; Stainless steel cable; 20" lengths	043156651580	\$27.70



# Specialty sensor and buzzer switches

## Timer-buzzer rectifier

The TBR is a multi-functional device made to serve as an added layer of security or convenience for your access control system. The TBR offers a delay timer, buzzer and AC to DC rectifier all in one package.

TBR-100



CSW-200



## EMS Series

This versatile sensor can be surface mounted above any door, ceiling or wall for request to exit applications. The EMS Series, Passive Infrared (PIR) Sensor, has the flexibility and low profile design to make it an effective sensor for managing building security and traffic flow.

## CSW Series

The CSW Series of switches were designed for a concealed desk application. They are used to release an electric lock or device from a remote location. The CSW Series currently operates via momentary action toggle switches that can be surface mounted.

WRT-K



## Wireless release kit (1 receiver, 2 transmitters)

The 900MHz receiver and transmitters allow wireless activation of electronic access-controlled doors. With two outputs, several doors can be controlled at the same time or with slight delay.

Product name	Product description	UPC	List price
TBR-100	Timer-buzzer rectifier with surge protection for strikes and other access control components	043156651740	\$64.90
EMS-100	Exit motion sensor with ceiling and surface mount adapters	043156651535	\$206.00
CSW-100	Flush mount concealed desk release; S.P.D.T. switch	043156651542	\$47.50
CSW-200	Surface mount concealed desk release; S.P.D.T. switch; Narrow stile	043156001637	\$47.50
WRT-K	Wireless receiver and transmitter (2) kit	043156081165	\$193.00
WT-2	Wireless transmitter (2) sold separate	043156081172	\$117.00

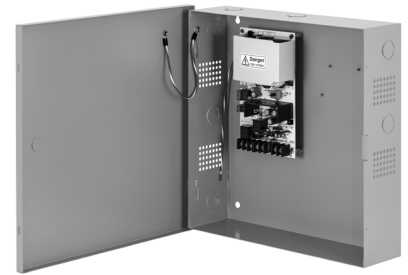
# Power supplies

## LP Series

### 150 and 250 models

The LP Series of power supplies include a 1.5 amp and 2.5 amp option to power various electronic access control devices and most single or double door applications. This line of UL294 certified, Class 2 power supplies have field selectable output voltage, a built-in charger for battery backup and the ability for fire alarm integration. Field replacement is simple with an industry common power supply board footprint and power can be easily managed with the addition of the RDB4 option board.

LP150, LP250



**Certifications include:**

- UL294, UL603, Class 2, FCC Part 15, CSFM, RoHS and CSA-C22.2 NO.205

**Accessories**

- RDB4 Option Board is a four output relay distribution board (LP250 only - sold separately)
- LP150B 1.5 AMP board only
- LP250B 2.5 AMP board only

Product name	Product description	UPC	List price
LP150	1.5 amp power supply with enclosure	043156085743	\$237.00
LP150B	1.5 amp power supply - board only	043156085781	\$130.00
LP250	2.5 amp power supply with enclosure	043156085750	\$315.00
LP250B	2.5 amp power supply - board only	043156085798	\$216.00
LP250RDB4	2.5 amp power supply and 4 output relay distribution option board with enclosure	043156085767	\$367.00
RDB4	4 output relay distribution option board - board only	043156085774	\$74.30



this page intentionally blank

# Weight and case quantity

## Electromagnetic locks

### WMG Series

Product name	UPC	Master carton quantities	Master carton weight (lb)*	Product weight (lb)*
WFP50	043156646128	75	14.3	0.19
WFP63	043156646135	50	11.5	0.23
WLBK1200	043156646166	10	7.5	0.75
WLBK600	043156646111	10	4.9	0.49
WMG1200	043156646142	3	16.3	5.43
WMG600	043156646098	5	16.2	3.24
WZBK1200	043156646159	10	15	1.5
WZBK600	043156646104	10	10.5	1.05

### MG Series

Product name	UPC	Master carton quantities	Master carton weight (lb)*	Product weight (lb)*
MG600	043156646173	6	13.3	2.22
MG600DT	043156646180	6	13.5	2.25
MG600-2	043156081103	3	15	5
MG600DT-2	043156081110	3	15	5
MLBK600	043156646210	12	7	0.58
MZBK600	043156646197	15	11.7	0.78
MG1200	043156646241	3	14.9	4.97
MG1200DT	043156646258	3	14.9	4.97
MG1200-2	043156081127	1	11	11
MG1200DT-2	043156081134	1	11	11
MLBK1200	043156646289	20	6	0.3
MZBK1200	043156646265	10	13.8	1.38
MUBK	043156646203	20	14.2	0.71
MFP50	043156646234	80	14.6	0.18
MFP63	043156646227	60	13.6	0.23

## Electric strikes

### CS Series

Product name	UPC	Master carton quantities	Master carton weight (lb)*	Product weight (lb)*
CS450-32D	043156645893	14	9	0.64
CS450-LBM-32D	043156645909	14	9.2	0.66
CS750-32D	043156645961	14	9	0.64
CS750-LBM-32D	043156645978	14	9.2	0.66
CSFP-KIT-10B	043156645916	100	14	0.14
CCFP-KIT-32D	043156087365	100	14.5	0.15
CCFP-KIT-10B	043156087358	100	14.5	0.15
CWFP-KIT-32D	043156645923	100	15.5	0.16
CWFP-KIT-10B	043156645930	100	15.5	0.16
CSLE-.5	043156087372	150	6	0.04
CSLE-1	043156645947	100	5.8	0.06
CSLE-2	043156645954	50	5.3	0.11

\* Weight is approximate and subject to change without notice.

Electric strikes

**MDS Series**

Product name	UPC	Master carton quantities	Master carton weight (lb)*	Product weight (lb)*
MDS100-32D	043156645985	14	14	1
MDS100-F-32D	043156646074	14	14	1
MDS100-LBM-32D	043156646081	14	14	1
MDS100-F-LBM-32D	043156645992	14	14	1
MDSFP-KIT-10B	043156646005	50	11.5	0.23

**NC Series**

Product name	UPC	Master carton quantities	Master carton weight (lb)*	Product weight (lb)*
NC450	043156087389	14	10	0.71
NC450-LBM	043156104895	14	10.2	0.73
NCFP-KIT-10B	043156087396	100	16	0.16
NCCFP-KIT-32D	043156087457	100	15	0.15
NCCFP-KIT-10B	043156087440	100	15	0.15
NCWFP-KIT-32D	043156087419	100	16	0.16
NCWFP-KIT-10B	043156087402	100	16	0.16
NC-RAMPS	043156087426	100	11.5	0.12

**RS Series**

Product name	UPC	Master carton quantities	Master carton weight (lb)*	Product weight (lb)*
RS210-US32D	194555701861	10	10.3	1.03
RS210-US10B	194555701854	10	10.3	1.03
RS210-LBM-US32D	194555701885	10	12	1.2
RS210-LBM-US10B	194555701878	10	12	1.2
RS310-F-US32D	194555702004	10	12	1.2
RS310-F-US10B	194555701991	10	12	1.2
RS310-F-LBM-US32D	194555702028	10	12.5	1.25
RS310-F-LBM-US10B	194555702011	10	12.5	1.25
RS310-US32D	194555701984	10	12	1.2
RS310-US10B	194555701977	10	12	1.2
RS310-LBM-US32D	194555702042	10	12.5	1.25
RS310-LBM-US10B	194555702035	10	12.5	1.25
RS SPACER-US32D	043156087433	63	15.5	0.25
RS SPACER-US10B	043156096336	63	15.5	0.25

Accessories

**Pushbuttons**

Product name	UPC	Master carton quantities	Master carton weight (lb)*	Product weight (lb)*
IPB-100	043156651351	54	10.8	0.2
IPB-100-N	043156001644	54	10.8	0.2
IPB-300	043156651375	50	10	0.2
IPB-300-N	043156651382	50	8	0.16
MPB-100	043156651405	50	8.2	0.16
MPB-100-N	043156651399	50	9	0.18

\* Weight is approximate and subject to change without notice.

Accessories

**Specialty switches**

Product name	UPC	Master carton quantities	Master carton weight (lb)*	Product weight (lb)*
TS-100	043156651498	50	9	0.18
TS-100-N	043156651504	50	9	0.18
WS-200	043156651511	36	6.35	0.18
WS-200-MB	043156651528	36	11.5	0.32

**Digital keypads**

Product name	UPC	Master carton quantities	Master carton weight (lb)*	Product weight (lb)*
DKP-165	043156651634	50	9	0.18
DKP-165-FM	043156651658	18	7.38	0.41
DKP-165-S	043156651641	18	8.5	0.47
DKP-NS	043156081189	25	3.175	0.13

**Touch bars**

Product name	UPC	Master carton quantities	Master carton weight (lb)*	Product weight (lb)*
TB-36	043156651467	4	13	3.25
TB-42	043156651474	4	14.5	3.63
TB-48	043156651481	4	16	4

**Pushplates**

Product name	UPC	Master carton quantities	Master carton weight (lb)*	Product weight (lb)*
PPH-100-AL	043156651429	12	10	0.83
PPH-100-PL	043156651412	18	11.3	0.63
PPH-200-LED	043156651443	20	8.6	0.43
PPH-50	043156651450	50	11	0.22

**Emergency glass breaks**

Product name	UPC	Master carton quantities	Master carton weight (lb)*	Product weight (lb)*
EGB-100-G	043156651597	40	10.7	0.27
EGB-100-R	043156651603	40	10.7	0.27
EGB-COV	043156651627	100	5.8	0.06
EGB-KEY	043156651610	150	3.9	0.03

**Door cords**

Product name	UPC	Master carton quantities	Master carton weight (lb)*	Product weight (lb)*
DC-HD-16	043156651559	30	6.4	0.21
DC-HD-16-10B	043156081097	30	6.4	0.21
DC-AL-20	043156651566	50	5.6	0.11
DC-BR-20	043156001651	50	5.6	0.11
DC-PL-12	043156651573	200	14.8	0.07
DC-PL-20	043156651580	50	5	0.1

\* Weight is approximate and subject to change without notice.

Accessories

**Specialty sensor and buzzer switches**

Product name	UPC	Master carton quantities	Master carton weight (lb)*	Product weight (lb)*
TBR-100	043156651740	100	7.9	0.08
EMS-100	043156651535	20	5.23	0.26
CSW-100	043156651542	45	4.7	0.1
CSW-200	043156001637	45	4.2	0.09
WRT-K	043156081165	25	6.5	0.26
WT-2	043156081172	100	13.61	0.14

**Power supplies**

Product name	UPC	Master carton quantities	Master carton weight (lb)*	Product weight (lb)*
LP150	043156085743	4	15.43	3.86
LP150B	043156085781	35	11.11	0.32
LP250	043156085750	4	15.43	3.86
LP250B	043156085798	35	12.75	0.36
LP250RDB4	043156085767	4	15.43	3.86
RDB4	043156085774	90	12.25	0.14

\* Weight is approximate and subject to change without notice.

## About Allegion

Allegion (NYSE: ALLE) is a global pioneer in seamless access. We keep people and their assets safe, wherever they are, bringing together simple solutions, convenient access and advanced technology.

For more, visit [www.allegion.com](http://www.allegion.com)

KRYPTONITE ■ LCN ■  ■ STEELCRAFT ■ VON DUPRIN