



ALX Series

Grade 2 Modular, Cylindrical Lock

Building on Schlage's long history of durability and strength, the ALX Series features X Factor qualities born from modular design, making it a Grade 2 lock unlike any other.

EXCEED CUSTOMER EXPECTATIONS

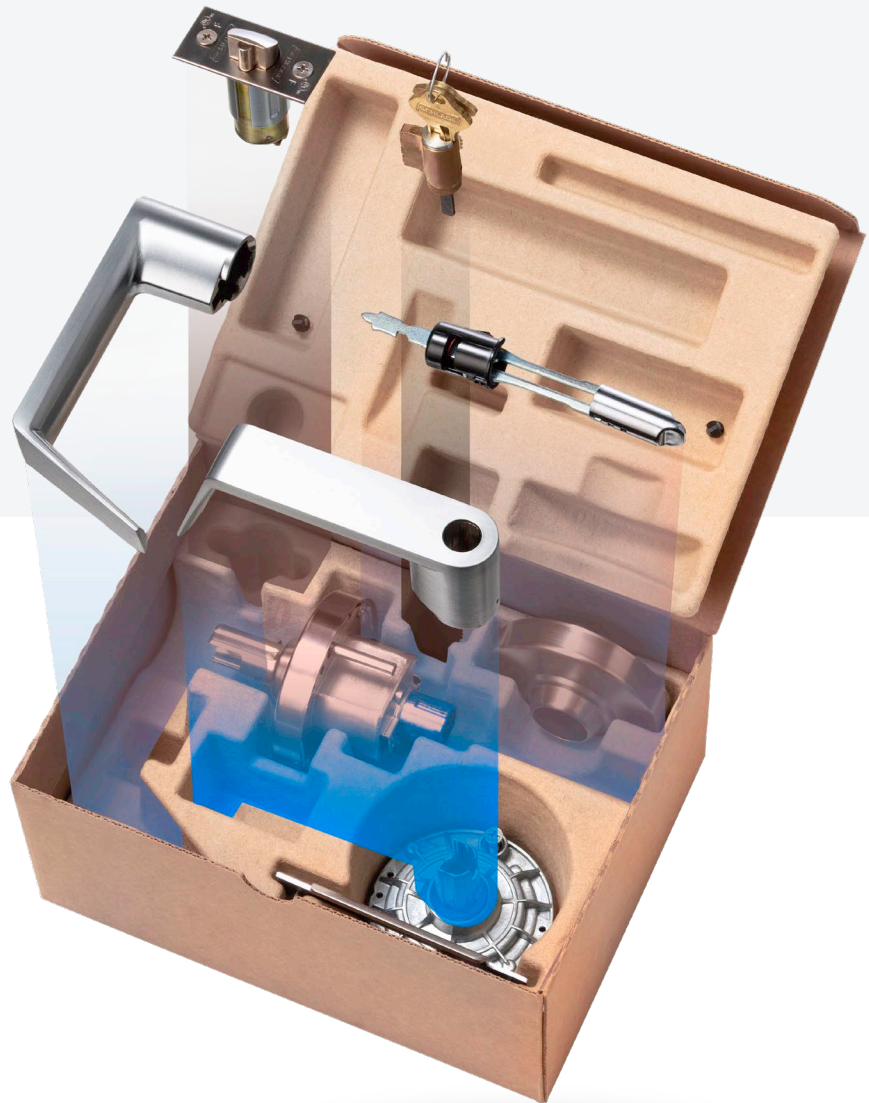
Modular design lets distributors opt into configuring as a value add for their customers. They can manage inventory any of three ways to best suit their business needs:

- Factory configured
- Distributor configured
- As separate chassis, lever and function kits

Distributor configuration creates a path to increased Grade 2 lock sales and improved customer service. Bypass the wait for factory configured product and instead offer same day product pickup.

INVENTORY FLEXIBILITY

Maximum utility from a patent pending single chassis design helps to minimize inventory stocking and allows flexible selling options. One chassis supports most functions and all cylinder applications to keep inventory burden low on the higher price chassis kits. Function and lever 5-pack kits round out configuration parts. You need only add cylinder parts when appropriate. ALX Series even shares ND levers. It provides an unprecedented level of flexibility to every aspect of how you choose to sell a Grade 2 lock.



A better box

Separate compartments make configuration easy and fast.

1. Drop in interior lever
2. Install interior function into chassis and place in box with outside lever on spindle
3. Drop in latch
4. Drop in cylinder or exterior function part (if applicable)

The X Factor

Qualities defining a lock designed to exceed expectations

The Schlage ALX Series offers an unprecedented level of flexibility to every aspect of how you use it in your business. Based on a modular design and built on a single chassis, ALX also provides an advantage to all your Grade 2 lock customers.

For Locksmiths: In its kitted form, locksmiths gain a job site problem solver. They can buy the most common finishes and levers for their market along with locksmith mixed function kits to use as truck stock, letting them answer unplanned needs in the moment and reduce call backs.

For End Users: An ALX Series lock provides a long term solution capable of easy function or appearance changeability to address the increasing market need for space repurposing.

For Contractors: ALX suites perfectly to the grade 1 ND Series by sharing roses and 9 of 10 levers. It is the ideal budget saver for new construction where a grade 2 lock is allowed.

Extreme Installation Simplicity

- Accommodates 1-3/8" to 1-3/4" door thickness with minimal chassis adjustment
- Captured screws in latch, strike and inside spring cage eliminate small, loose parts

Exceptional Durability

- Deep-drawn spindle with 5 points of lever engagement prevents droop and wobble
- Grade 1 compression springs

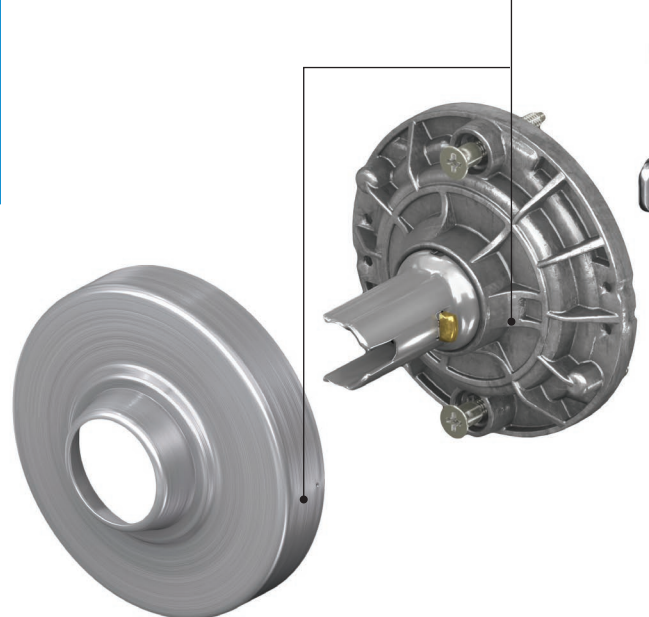
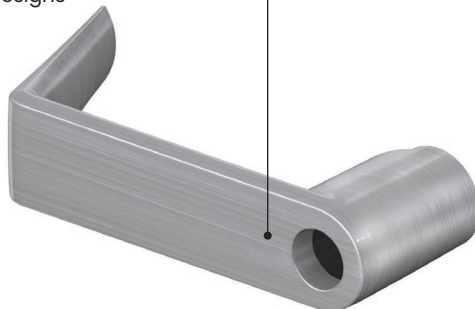
Chassis Kit Components

Expansive Lever Offering

Perfectly suites with ND Series levers to offer 10 total lever designs

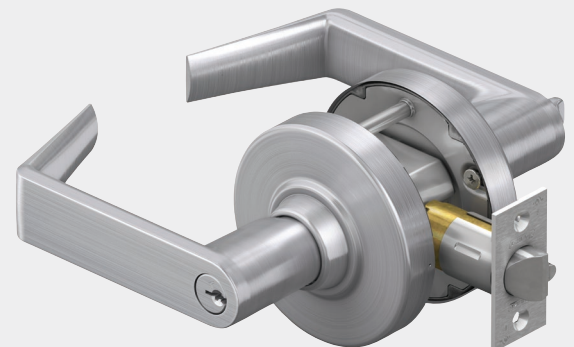
Inside Lever Pack Options:

CL - closed (no hole)
BT - button

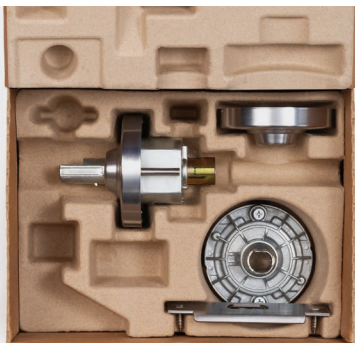
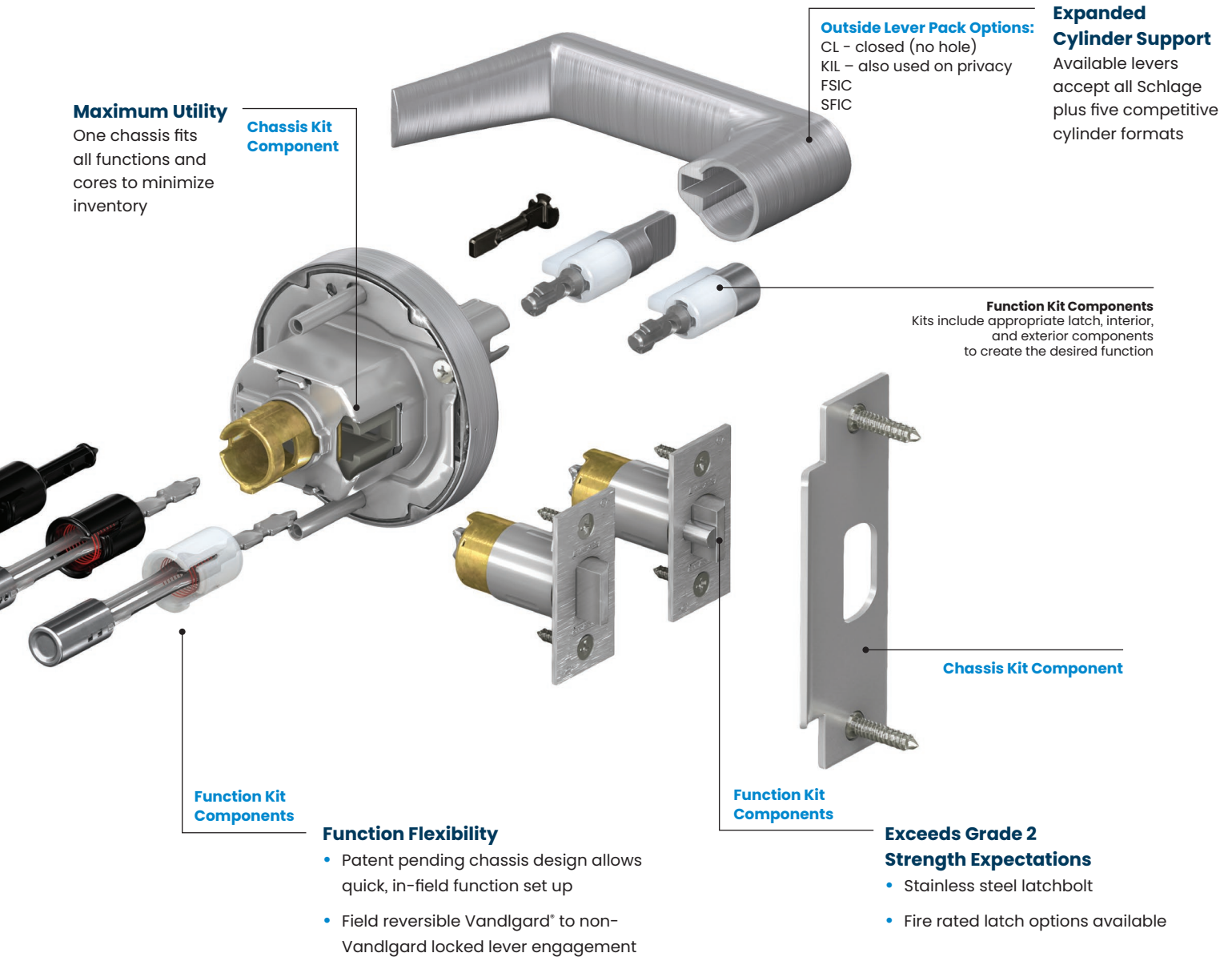


UNEXPECTED VALUE

The Schlage ALX Series is a stronger lock and an exceptional value. Kit pricing is designed to coordinate with factory configured equivalents. So whether factory configured, distributor configured or sold as kits, the pricing structure creates list price parity giving distributors equal footing in how they choose to price and promote.



Schlage ALX Series can be sold factory configured, distributor configured from kits, or sold as kits.



Chassis kits are chosen solely by desired finish. They are shipped non-Vandlgard and can be configured to Vandlgard without the need for extra parts.



Function kits are sold in packs of five defined by function, finish, and latch backset. Locksmith assortment kits are available.



Levers are sold in five packs of same design with inside levers defined by function, finish and design and outside levers by function/cylinder, finish and design.

Standard Specifications

Other options available, see catalog or price book for details.

Chassis	
Material	Steel, zinc dichromated for corrosion resistance
Door thickness	Fits 1-3/8" to 1-3/4" doors without adjustment
Handing	Non-handed
Functions	
Non-keyed	10 Passage; 25 Exit Lock; 40 Privacy; 44 Hospital Privacy; 170 Single dummy; 172 Double dummy
Keyed	50 Entrance/office; 53 Entrance; 70 Classroom; 80 Storeroom
Trim	
Levers	Pressure cast zinc, plated to match product finish specification
Roses	Wrought brass plated to match finish, 3-7/16" diameter
Latches & Strikes	
Backset	Standard: 2-3/4" Optional: 2-3/8", 3-3/4", 5"
Faceplate	1-1/8" x 2-1/4" square corners; options available (see price book)
Bolt	Standard: 7/8" bolt diameter, up to 1" housing diameter, 1/2" throw in Stainless Steel Optional: 1" bolt diameter with 1/2" throw, 3/4" anti-friction fire latch
Strike	Standard: ANSI curved lip (1-1/4" x 4-7/8" x 1-3/16") Optional: T strike (see catalog for details)
Cylinders & Key Systems	
Cylinder	Standard: Conventional 6-pin in solid brass Optional: FSIC, SFIC, and 7-pin SL cylinder formats plus less cylinder options made to fit non-Schlage cylinders from Corbin Russwin and Sargent
Keyway	Standard: 6-pin, patented Everest 29 S123 keyway Optional: Open, restricted, Primus®, master keying, and construction keying
Warranty	
	10-year limited
Certifications	
ANSI/BHMA	Certified A156.2-2022 Series 4000, Grade 2; exceeds standard for lever and spindle strength and durability
UL/cUL	All locks listed for A label single fire door 4' x 8' or 4' x 10' 3-hour; pair doors 8' x 8' 3-hour; and 8' x 10' 90-minute
UL437	Optional UL listed high-security cylinders
Other	ADA compliant levers (all designs); CA Fire Code compliant levers (all with return of 1/2" (64 mm) or less; ICC A117.1 compliant; meets Federal FF-H-106C Series 161; meets FL Building Code and Miami Dade requirements for hurricanes

Lever Designs



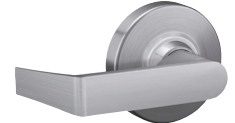
Athens (ATH)



Omega (OME)



Boardwalk (BRK)



Rhodes (RHO)



Broadway (BRW)



Saturn (SAT)



Latitude (LAT)



Sparta (SPA)



Longitude (LON)



Tubular (TLR)

Vandlgard® Protection

All locking functions feature field reversible Vandlgard® protection.

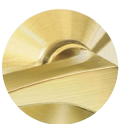
The outside lever rotates freely up and down when locked, limiting the ability of vandals to apply excessive force which could damage the lock.



Finishes



605
Bright Brass



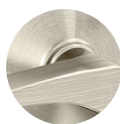
606
Satin Brass



612
Satin Bronze



613
Oil Rubbed Bronze



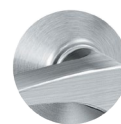
619
Satin Nickel



622
Matte Black



625
Bright Chrome



626/626AM
Satin Chrome



643e
Aged Bronze