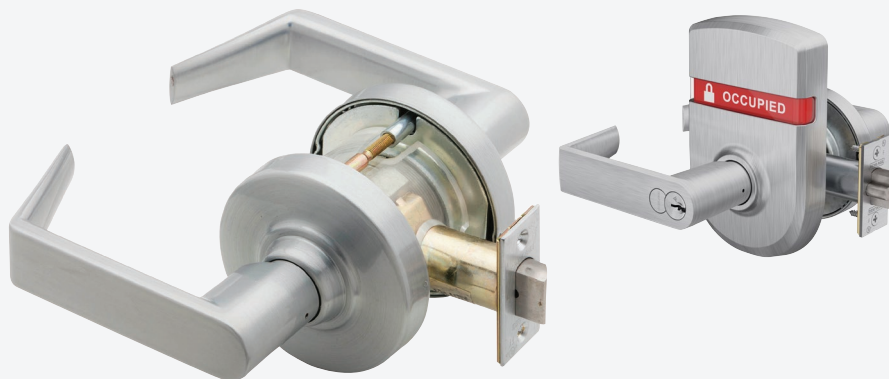


# ND Series

## Grade 1 Cylindrical Locks



### Overview

Strength and durability are more than numbers, you can actually feel it in the lock. ND Series locks significantly exceed BHMA testing requirements. So, whether your application calls for high abuse resistance or just reliable operation over millions of cycles, you can be confident ND Series locks will last and perform.

- Prevents entry and maintains egress against 3,100 in-lb abusive lever torque—the equivalent of over 690 lbs applied to the end of a 4-1/2" lever (2.6x BHMA requirements)
- Restricts entry against 1,600 lbs offset lever pull (8x BHMA requirements)
- Withstands attack against 100 vertical impacts<sup>1</sup> (20x BHMA requirements)
- Near zero droop and wobble after 16M cycles (16x BHMA requirements)
- Latch retraction with 200-lb preload for confident operation in warped and preloaded doors (4x BHMA requirements)

### The Added Benefits of Layered Key System Security

A strong lock is only part of the security equation for mechanical locks – proper key security is equally important.

- Patented Everest 29™ cylinders prohibit unauthorized key duplication at local retail stores
- Dealer and end user restricted, geographically exclusive Primus cylinder options for advanced key control
- Available compatibility with 10 different non-Schlage key systems

Note: Performance related to cylinder pull testing requirements is dependent on cylinder format and may not meet full Grade 1 requirements when an interchangeable core is used.

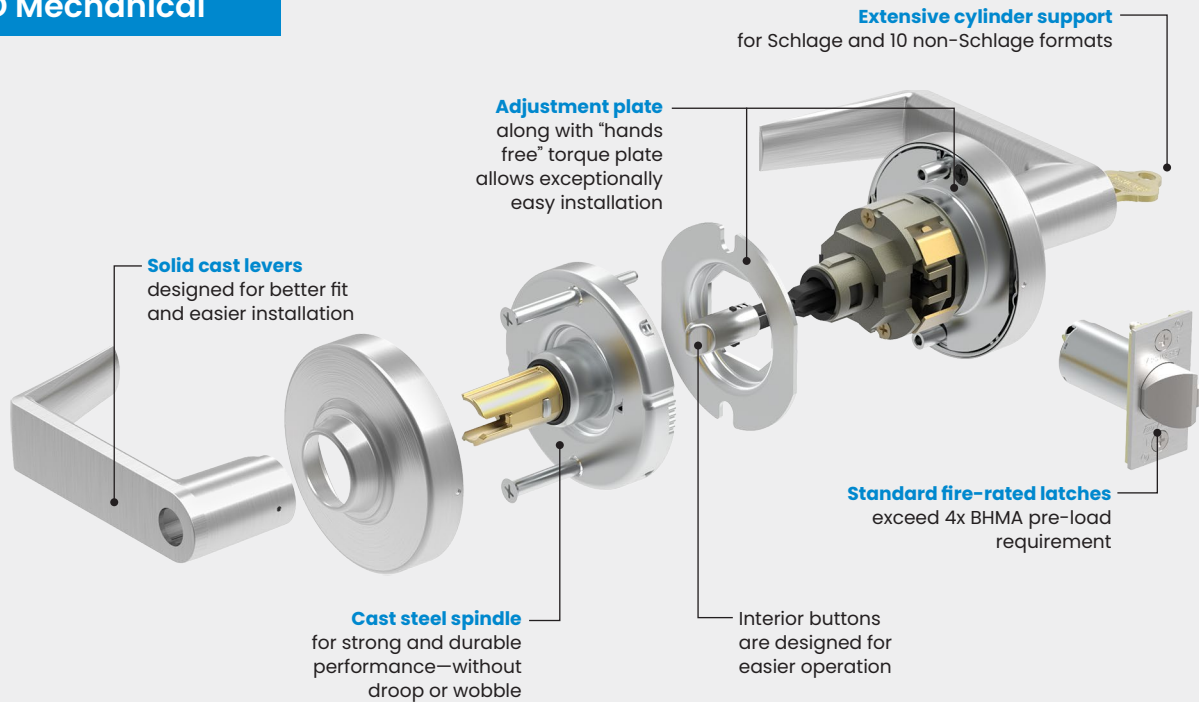
1. Vertical impact testing stopped after 100 blows with no failure or indication of stress.

### Features & Benefits

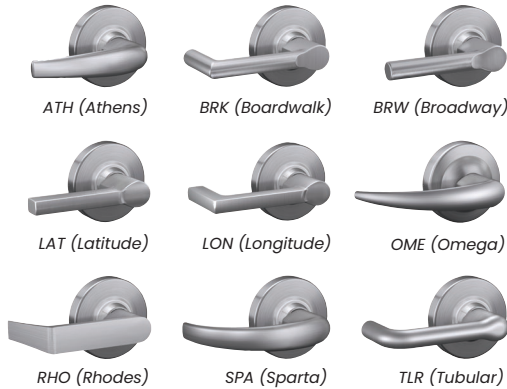
ND Series offers Schlage's widest array of finishes, styles and functions available in a cylindrical lock.

- ANSI/BHMA Grade 1 certified
- 27 mechanical, cylindrical functions plus eight that feature Vandlgard® locked lever protection (see [catalog](#) for more details)
- Three electrified functions also available (see [data sheet](#) for more details)
- Nine ADA compliant lever options
- Nine standard finishes plus an antimicrobial coating option
- [Status indication](#) and [ligature-resistant](#) trim options
- Available with lead lining
- UL Listed 3-hour fire rated
- BAA compliant
- Perfectly suited to the ALX Series Grade 2 cylindrical locks
- Supports Conventional, FSIC, and SFIC cylinder formats plus high-security UL 437 and competitive core options
- Multiple key systems include open, patented, restricted, and geographically exclusive options

## ND Mechanical



## Trim Options



### Standard Trim

**Functions:** available on all mechanical and electrified functions.

**Finishes:** available in all standard finishes.

**Size:** Rose diameter 3-7/16"; lever lengths vary

See [cut sheet](#) for sizing details.

### Indication Trim

**Functions:** available on eight mechanical functions plus functions featuring Vandlgard® locked lever protection.

**Finishes:** available in all standard lever designs and finishes.

**Size:** 6-1/16" x 3-11/16" x 15/16"

See [web page](#) for more details.

### HSLR Ligature-Resistant Trim

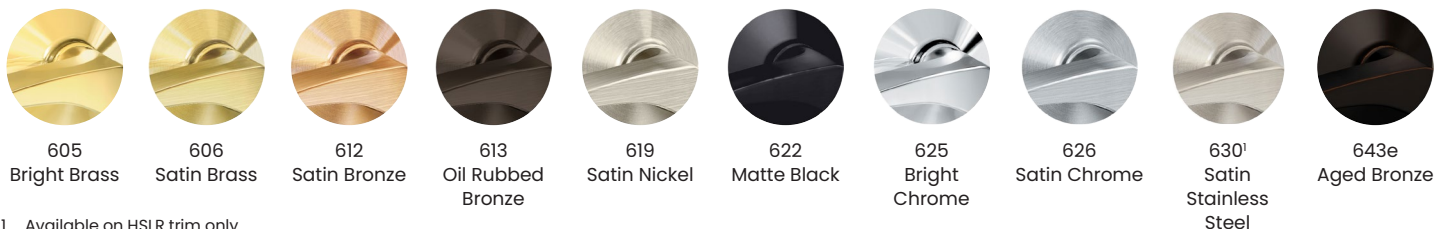
**Functions:** available on 14 mechanical functions including all functions featuring Vandlgard® locked lever protection and six electrified functions.

**Finishes:** 630 Satin Stainless Steel only.

**Size:** 8-1/2" x 6" x 3"

See [web page](#) for more details.

## Finishes



1. Available on HSLR trim only.

# ND Series Ordering Instructions

To order ND Series products, attribute values should be provided in the same sequence shown below. Each value should be separated by a period.

## Example

Inside lever design different than outside					
<b>ND80</b>	<b>P6</b>	<b>8RO</b>	<b>626</b>	<b>RHO</b>	
2	3	4A	4C	5A	

Required for all lock orders	
Brand	Series + Function
Cylinder type (keyed functions only)	Outside style
Outside lever design	Inside style
Outside rose design	Inside rose design
Outside finish	Inside finish
Handing (HSLR or Indication trims)	Door dimensions
Latch	Options
Strike	Keying
Door thickness	
Extended	
Strike lip length	
Latch extension	
Box for ANSI strike	
Pack cylinders loose (PLC)	
Trim options	
Breakaway Rhodes lever	
Special options	
Screw option	
Request to Exit (RX)	
Buy American Act compliant	
Keying code	
Keyway	
Pack keys independently	

Only required if specifying less rose.

Only required if specifying different than outside style.

Only required when deviating from the products default. Specify only the deviated attribute(s).

Only required when deviating from the product default. Specify only the deviated attribute(s).

Detail		
1	Brand	Specify SCH for Schlage (required only when specifying a product Less "LLL" any attribute).
2	Series + Function	Specify ND + function choice from list
3	Cylinder type (specify code for keyed functions only)	<div> <b>Conventional cylinders</b>  <b>P6</b> 6-pin cylinder (default)  <b>Z</b> 6-pin cylinder, keyed 5  <b>Everest SL cylinder, 7-pin</b>  <b>L</b> Less Schlage cylinder  <b>C</b> Less double cylinder </div> <div> <b>FSIC - Full size interchangeable core</b>  <b>R</b> FSIC, 6-pin  <b>T</b> FSIC - Construction Core  <b>M</b> Everest SL - FSIC, 7-pin  <b>J</b> Less Schlage FSIC </div> <div> <b>SFIC - Best® style, small format interchangeable cores</b>  <b>G</b> SFIC 7-pin  <b>H</b> Refundable Construction SFIC  <b>BDC</b> Disposable Construction SFIC  <b>B</b> Less SFIC </div> <p>Other options feature levers made to fit competitive cylinders (see page 34 for complete list).</p>
4	Outside style	<b>4A:</b> input lever code <b>4B:</b> required only if specifying less rose <b>4C:</b> input ANSI finish code
5	Inside style	Specify only if different than outside design choices or if specifying a product Less (LLL) any attribute
6	Handing	When ordering HSLR or Indication trims, specify: <b>LH</b> Left Hand; <b>LHR</b> Left Hand Reverse; <b>RH</b> Right Hand; <b>RHR</b> Right Hand Reverse
7	Latch	Leave blank or specify part number if different from default latchbolt 13-247: 2-3/4" backset-with 1-1/8" x 2-1/4" square corner faceplate
8	Strike	Leave blank or specify part number if different from default strike 10-025: ANSI, no box, 1-1/4" x 4-7/8"
9	Door dimensions	Specify only attributes that deviate from these defaults: <b>9A:</b> 1-3/4" thickness <b>9B:</b> EE (Extended equally) <b>9C:</b> 1-3/16" lip
10	Options	Specify desired additional options: <b>10A:</b> 43-005 (5" backset extension) <b>10B:</b> K510-066 <b>10C:</b> PCL <b>10D:</b> Indicator message or instruction rose options - see <a href="#">price book</a> <b>10E:</b> Breakaway Rhodes lever is dependent on type (closed, KIL, FSIC, or SFIC) - see price book <b>10F:</b> XN12-012 (standard trim chassis spacers) or XN12-307 (lead lining) <b>10G:</b> TORX <b>10H:</b> RX (functions ND10, ND12, ND80, ND81, and ND96) <b>10I:</b> BAA
11	Keying	Specify desired additional options: <b>11A:</b> Keyed Different (KD) <b>11B:</b> Specify only if different from default of Everest 29 S123 (Conventional and FSIC cylinders) or, if master keyed, Everest 29 S145 (Conventional and FSIC) and R125 (SFIC) <b>11C:</b> Specify only when requesting that keys be packed independently.

# Specifications

Chassis	
Material	Modular design of zinc and steel components plated for corrosion protection
Door thickness	<b>Standard:</b> 1-5/8" (41 mm) to 2-1/8" (54 mm) <b>Optional:</b> 1-3/8" (35 mm) – 6" (152 mm) EE, EO, EI, ED configurations
Backset	<b>Standard:</b> 2-3/4" (70 mm) <b>Optional:</b> 2-3/8", 3-3/4", 5" (60, 92, 127 mm)
Handing	Non-handed
Trim	
Levers	<b>Standard:</b> Pressure cast zinc, plated to match product finish specification in nine designs – Athens (ATH), Boardwalk (BRK), Broadway (BRW), Latitude (LAT), Longitude (LON), Omega (OME), Rhodes (RHO), Sparta (SPA), and Tubular (TLR) <b>Optional:</b> Tactile feature available, specify 8AT, 8BK, 8BY, 8LT, 8LN, 8RO, 8SP, or 8TR
Locked status indication trim	Cast zinc with high-density polycarbonate window
HSLR trim	High Security Ligature Resistant (HSLR) trim is heavy wrought, reinforced stainless steel in 630 Satin Stainless Steel finish
Roses	Wrought brass or zinc, plated to match product finish specification
Finishes	<b>Nine available:</b> 605, 606, 612, 613, 619, 622, 625, 626, 643e; optional antimicrobial coating is available on 626—order as 626AM; HSLR trim available in 630 satin stainless steel only
Latches & Strikes	
Latch	<b>Standard:</b> 1/2" (12 mm) throw spring latch or deadlatch (Stainless Steel) <b>Optional:</b> 3/4" (19 mm) throw anti-friction deadlatch available for pairs of doors
Strike	<b>Standard:</b> ANSI curved lip: 1-1/4" x 4-7/8" (32 mm x 124 mm) with 1-3/16" (30 mm) lip length <b>Optional:</b> T Strike, ANSI strikes with alternative lip lengths, dust box options
Cylinders & Key Systems	
Formats	<b>Standard:</b> 6-pin Conventional cylinder with two patented keys <b>Optional:</b> FSIC, SFIC, and 7-pin SL cylinder formats plus less cylinder options made to fit non-Schlage cylinders from Best, Corbin Russwin, Medeco, Sargent and Yale
Access security	<b>Standard:</b> 6-pin, patented Everest 29 S123 keyway <b>Optional:</b> Open, restricted, Primus®, master keying, and construction keying
Warranty	
	10-year mechanical and 3-year electro-mechanical
Certifications	
ANSI/BHMA	All ND Series comply with A156.2-2011, Series 4000 Grade 1 cylindrical locks; Wired electrified complies with A156.25 (indoor)
ICC	Complies with ICC A117.1 Accessible and Usable Buildings and Facilities
UL/cUL	UL 10C and CAN/ULC-S104; All locks 3-hour A label single fire door 4'0" x 10'0"; pair doors 3-hour fire door 8'0" x 8'0" with 3/4" latch option; pair doors 90-minute fire 8'0" x 10'0" with 3/4" latch option
CA Fire Code	All levers with a return to door of 1/2" (13 mm) or less comply (Rhodes, Sparta, Tubular, Omega, Longitude and Boardwalk)
FL Building Code	Complies with Florida Building Code (ASTM E330, E1886, E1996) and Miami Dade (TAS 201, 202, 203) requirements for hurricanes
Federal	Meets FF-H-106C Series 161 BAA compliant, all functions