

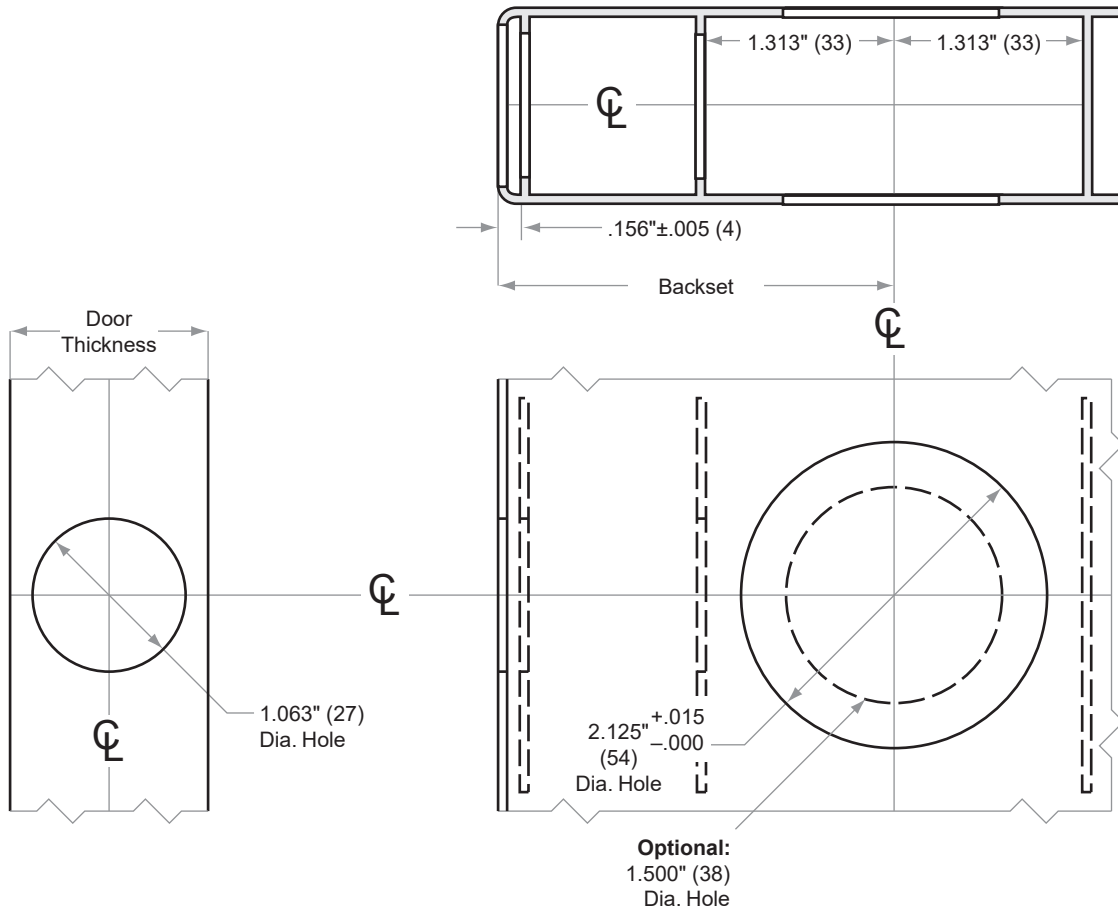


B600/700/800-Series

Models B660/661/662/663, B760/761/762/763,
B860/861/862/863

- Door Type: Metal, Flat
- Door Thickness: 1½" (35 mm)–2½" (64 mm)
- Faceplate: Circular Drive-In
- Backsets: 2¾" (60 mm), 2¾" (70 mm), 3¾" (95 mm), 5" (127 mm)

For metal door installations, suitable reinforcement is required to support latch in center of door and to prevent lateral movement



2⅛" bore required with indicator trim

Dimensions shown in parentheses () are in millimeters.

Door preparation template