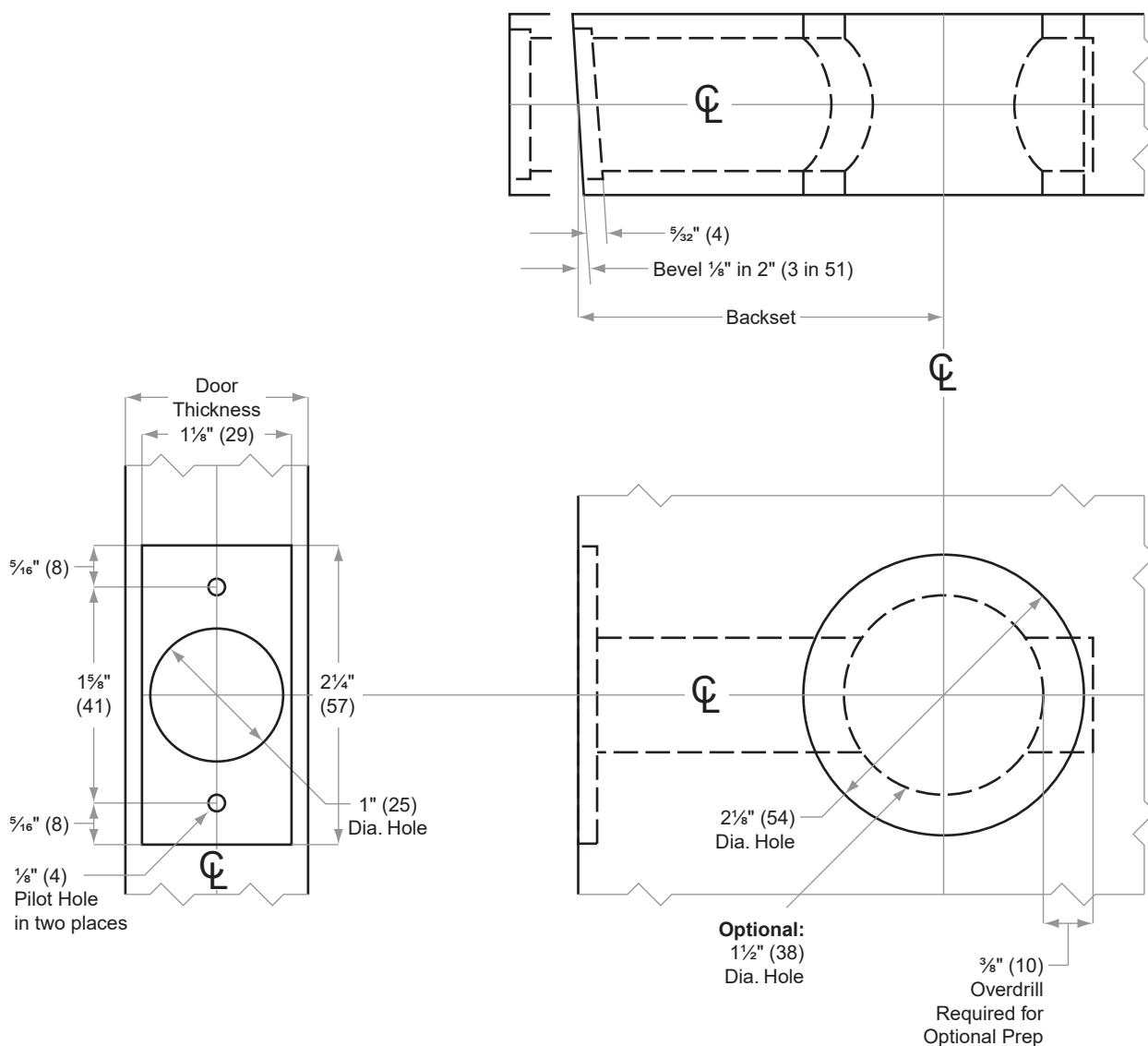




B600/700/800-Series

Models B660/661/662/663, B760/761/762/763,
B860/861/862/863

- Door Type: Wood or Composite, Flat or Beveled
- Door Thickness: 1 1/8" (35 mm)–2 1/2" (64 mm)
- Faceplate: Square Corner, 1 1/4" (29 mm) wide
- Backsets: 2 3/8" (60 mm), 2 3/4" (70 mm), 3 3/4" (95 mm), 5" (127 mm)



2 1/8" bore required with indicator trim

Dimensions shown in parentheses () are in millimeters.

Door preparation template