



PM-Series

Lock Case Dimensions

**ALLEGION™**

Case Size: 4.438" x 6.063" x 1" (113 mm x 154 mm x 25 mm)

Backset: 2.750" (70 mm)

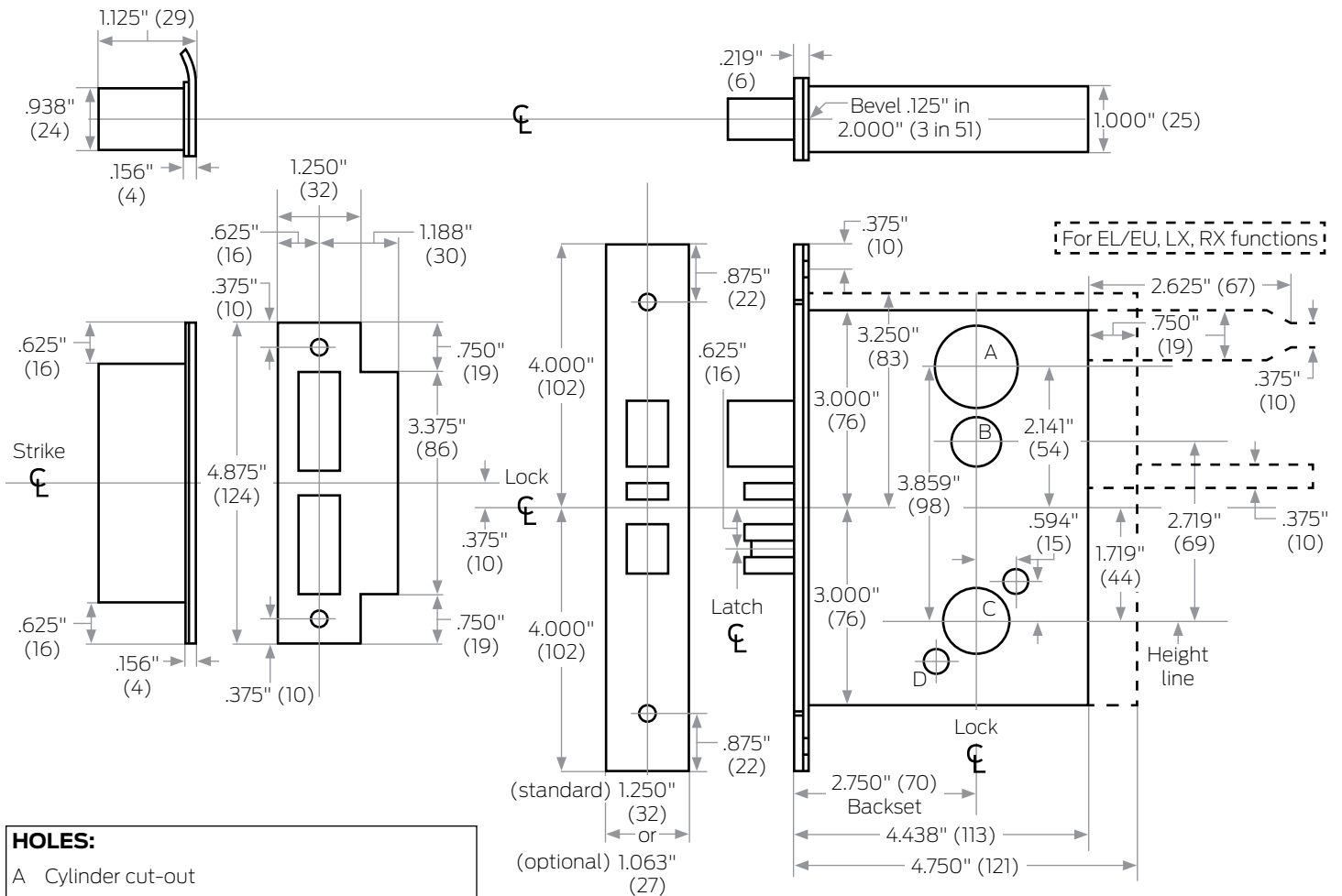
Door Range: 1.375" – 2.500" (35 mm–64 mm)

Lock Front: 1.250" x 8" x .219" (32 mm x 203 mm x 6 mm) Standard
1.063" x 8" x .219" (27 mm x 203 mm x 6 mm)

Lever to Cylinder: 3.859" (98 mm)

Lever to Turn Piece: 2.719" (69 mm)

Height Line to Center of Deadbolt: 3.031" (77 mm)

**HOLES:**

- A Cylinder cut-out
- B Turn piece and occupancy indicator
- C Knob or lever cut-out
- D Mounting holes

NOTES:

1. Dimensions are maximum for the product.
2. Templates are not to scale.
3. Standard strike is shown on each template for dimensions only.
4. Dimensions do not provide allowances for door silencers, weather stripping, sound proofing or other additions to door or door frames.

ANSI Standards: PM-Series locks meet all requirements for installations in doors and frames prepared in accordance with ANSI specifications A156.13, 2017.

Metal Doors: Suitable reinforcement is required to support lock case in center of door and to prevent door from compressing when trim is tightened. (See ANSI A115.1)

Thick Doors: Locks for non-standard door thickness may require special instructions.

Dimensions shown in parentheses () are in millimeters.
Drawing not to scale.

Door preparation template

P1